



Fte[®]
maximal

Catalogue

2026

Edition V1 May 2026

■ Fte maximal: Technological R-evolution

The work carried out in almost **more than 60 years** has turned Fte maximal into a **leading brand** within the sector, both in European markets and in other international markets.

Fte maximal was born in 1965 in Muhlacker, a small German city, and since its inception it has defined itself as a company dedicated to the **development and manufacture of elements for the capture, amplification and distribution of both terrestrial and satellite signals**, focused on offering comprehensive solutions to the professional telecommunications installer market

At Fte Maximal, we will remain fully committed to the evolution and growth of our products and solutions for all our customers.

■ Index

Reception

Outdoor Aerials	Pg. 01
Satellite TV Aerials	Pg. 04
Compact Headends	Pg. 06
Programmable Headends	Pg. 06
Multiband headends	Pg. 09
Headends amplification	Pg. 09
Indoor, mast, line and Multiband Amplifiers	Pg. 09

Distribution

Coaxial Cables	Pg. 10
Connectors and Adapters	Pg. 14
Distribution Elements	Pg. 17

Multiswitches

Multiswitches	Pg. 20
---------------------	--------

Indoor

Digital Receivers	Pg. 20
Indoor A/V Equipment	Pg. 20

Instrumental

Field Strength Meters	Pg. 25
-----------------------------	--------

Telephony

Telephony: Cables, components and supports	Pg. 26
--	--------

Networks

Structured Cabling	Pg. 26
Cabinets	Pg. 27

HDMI Cables

HDMI Cables	Pg. 28
-------------------	--------

HDMI equipments

HDMI equipments	Pg. 29
-----------------------	--------

Optical Fiber

Optical Fiber	Pg. 29
---------------------	--------

Electric car charger

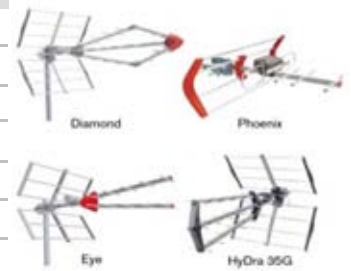
Electric car charger	Pg. 30
----------------------------	--------

Index of References

Index of References	Pg. 32
---------------------------	--------

UHF aerials

CODE	REFERENCE	DESCRIPTION	PACKAGING
9003955	Diamond	UHF antenna 28 elements. Gain: 17,5 dB	1
9003955/5	Diamond	UHF antenna 28 elements. Gain: 17,5 dB	5 / 35
9003957	HyDra 35G	UHF antenna 21 elements. Gain: 14,5 dB.	1
9003957/12	HyDra 35G	UHF antenna 21 elements. Gain: 14,5 dB.	12/72
9003960	Eye	UHF antenna 12 elements. Gain: 11,5 dB.	1
9003960/10	Eye	UHF antenna 12 elements. Gain: 11,5 dB.	10 /120
9003953	Phoenix	UHF antenna 5 elements. Gain: 9.5 dB.	1
9003953/10	Phoenix	UHF antenna 5 elements. Gain: 9.5 dB.	10/150



FM / DAB / BIII aerials. F Series

CODE	REFERENCE	DESCRIPTION	PACKAGING
9002005-F	F 0-F	FM Omnidirect Antenna. Gain: 1 dB.	1/10
9003924	F DAB F	DAB Omnidirect Antenna. Gain: 1 dB.	1
9003924/10	F DAB F/10	DAB Omnidirect Antenna. Gain: 1 dB.	10



Log-periodic aerials. LOG Series

CODE	REFERENCE	DESCRIPTION	PACKAGING
0252845	LOG 2845 FG	Antenna 28 elements C/21-48. Gain: 13.5 dB.	10/160
0202000	BVF	Clamp for vertical polarization.	1



Pluggable filter

CODE	REFERENCE	DESCRIPTION	PACKAGING
0520315-01	Lte 5690 Zn	Plug-in bandpass filter 5-694 MHz LTE Ready.	1



Wall brackets for mast

CODE	REFERENCE	DESCRIPTION	PACKAGING
9004000	GTS	Wedge wall simple bracket. L type.	1 / 20
9004001	GTP 1	Wedge wall simple bracket. max. Ø 60 mm. Length 200 mm.	1 / 12
9004002	GTP 2	Wedge wall simple bracket. max. Ø 60 mm. Length: 400 mm.	1 / 12
9003041	GT 20	Mast brackets. Max. Ø 50 mm. Length: 200 mm.	1 / 16
9003042	GT 40	Mast brackets. Max.Ø 50 mm. Length: 400 mm.	1 / 14



Clamps for mast

CODE	REFERENCE	DESCRIPTION	PACKAGING
9004004	BRC	Short clamp. Maximum mast diameter: 60 mm.	1 / 50
9004005	BRL	Long clamp. Maximum mast diameter: 60 mm.	1 / 50
9004027	BRD	Double clamp. Maximum mast diameter: 60 mm.	1 / 50



Telescopic masts

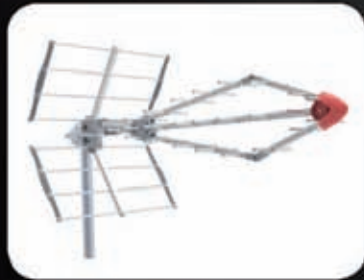
CODE	REFERENCE	DESCRIPTION	PACKAGING
9004031	M 325	Telescopic mast. 3000 x Ø 25 x 2 mm.	6
9004032	M 332	Telescopic mast. 3000 x Ø 32 x 2 mm.	6
9004033	M 338	Telescopic mast. 3000 x Ø 38 x 2 mm.	6
9004034	M 345	Telescopic mast. 3000 x Ø 45 x 2 mm.	4
9004035	M 350	Telescopic mast. 3000 x Ø 50 x 1,5 mm.	6



UHF outdoor antennas with 5G filter.

All options with maximum reliability

Lte 5G
Ready



Diamond

HyDra 35G

eye

Phoenix

17,5 dB

14,5 dB

11,5 dB

9,5 dB

	Diamond	HyDra 35G	Eye	Phoenix
Code	9003955	9003957	9003960	9003953
Number of elements	26	21	12	5
Channels	21-48	21-48	21-48	21-48
Frequency range	470 – 694 MHz	470 – 694 MHz	470 – 694 MHz	470-694 MHz
Gain	17.5 dB	14.5 dB	11.5 dB	9.5 dB
Front to back ratio	15-25 dB	15-25 dB	15-20 dB	8-13 dB
Half power beam width Horizontal (-3 dB)	38°	35°	42°	50°
Half power beam width Vertical (-3 dB)	52°	30-40°	48°	60°
Impedance	75 Ω	75 Ω	75 Ω	75 Ω
Length	1085 mm	875 mm	767 mm	435 mm
Weight	1,72 Kg	1,48 Kg	1,06 Kg	0,67 Kg
Individual packing dimensions (An. x Al. x P)	1125 x 315 x 105 mm	1080 x 135 x 70 mm	530 x 240 x 90 mm	530 x 80 x 180 mm
EAN code	8436545306185	8436545306185	8436545306413	8436545306437
Packing quantity	1 / 5	1 / 12	1 / 10	1 / 10

Connectable masts zinc

CODE	REFERENCE	DESCRIPTION	PACKAGING
9004009	M 150	Connectable mast. 1500 x Ø 35 x 1,5 mm.	6
9004010	M 250	Connectable mast. 2500 x Ø 35 x 1,5 mm.	6
9004066	M 340	Connectable mast. 3000 x Ø 40 x 2 mm.	4



Mechanical accessories

CODE	REFERENCE	DESCRIPTION	PACKAGING
9004046	BHC	Mast base.	1 / 15
9004047	BT	Tile base.	1 / 3
9004048	ACH	Chimney support.	1 / 6
9004086	GCH	Chimney holder with metallic band.	2
9004087	BGCH-5	Metallic band for chimney holder 5 m	1
9004088	BGCH-25	Metallic band for chimney holder 25 m	1
9004089	BMU	Multiuses base (includes 2 clamps).	1 / 10



Accessories

CODE	REFERENCE	DESCRIPTION	PACKAGING
9004024	TPG	Wedge wall bracket metric 8 x 60 mm	25
9004020	TPV	Wind wedge metric 8 x 60 mm	25
9004021	BPV 35	Wind clamp mast Ø 35 mm	1 / 25
9004041	BPV 40	Wind clamp mast Ø 40 mm	1 / 25
9004022	T 1/4	Tightener for wind cables 1/4	25
9004023	T 5/16	Tightener for wind cables 5/16	10
9004042	SJT	Wind shackle.	25
9004043	TPM 35	Mast cap Ø 35 mm. Bag of 6 pcs.	1
9004044	TPM 40	Mast cap Ø 40 mm. Bag of 6 pcs	1
9004052	BRIDA OMEGA	Support aerial for masts	1
9004026	AIT	Plastic clamp. Bag of 100 pcs.	1/100
0703011	AIG	Plastic clamp staple. Bag of 100 pcs.	1/100
0703028	GRT6-W	Staple wedge RG-6. white color. Bag 100 pcs	1
0703029	GRT6-B	Staple wedge RG-6. black color. Bag 100 pcs	1



Towers 180 mm

CODE	REFERENCE	DESCRIPTION	PACKAGING
9180000	TFT 180/1	Top section tower. 180 x 1,5 mm.	1
9180001	TFT 180/2	Top section tower. 180 x 2,5 mm.	1
9180002	TIT 180	Middle section tower. 180 x 2,5 mm.	1
9180003	BFT 180	Fixed tower base of 180 mm	1 / 4
9180004	BGT 180	Fixed tower base of 180 mm with hooks	1 / 4
9180005	BAT 180	Folding tower base of 180 mm	1 / 4



Towers 250 mm

CODE	REFERENCE	DESCRIPTION	PACKAGING
9180010	TFT 250/2	Top section tower. 250 x 2,5 mm.	1
9180011	TIT 250	Middle section tower. 250 x 2,5 mm.	1
9180012	BFT 250	Fixed tower base of 250 mm.	1 / 4
9180013	BGT 250	Fixed tower base of 250 mm with hooks.	1 / 4
9180014	BAT 250	Folding tower base of 250 mm without hooks.	1 / 4



Wind guides steely

CODE	REFERENCE	DESCRIPTION	PACKAGING
9004016	CPV 2	Cable reel 100 m. Steely braid. Ø2 mm.	1
9004018	CPV 3	Cable reel 100 m. Steely braid. Ø3 mm.	1
9004040	CPV 4	Cable reel 100 m. Steely braid. Ø4 mm.	1



CPV 3

Satellite TV Aerials

RECEPTION

Steel offset dishes. OR Series

CODE	REFERENCE	DESCRIPTION	PACKAGING
0785811	OR 58 SB	Individual offset parabola 58 cm. Gain: 10,7 GHz: 33.5 dB. 11,7 GHz: 34.8 dB. 12,7 GHz: 35.4 dB Galvanised steel. Light grey.	1
0785811-4	OR 58 SB-4	Offset dish 58 cm pack 4 units. Galvanised steel. Light grey.	4
0785811-24	OR 58 SB-24	Offset dish 58 cm pack 24 units.. Galvanised steel. Light grey.	24 / 120
0788011	OR 80 SB	Offset dish 80 cm individual. Gain: 10,7 GHz: 36.5 dB. 11,7 GHz: 37.3 dB. 12,7 GHz: 38.0 dB Galvanised steel. Light grey.	1
0788011-4	OR 80 SB-4	Offset dish 80 cm pack 4 units. Galvanised steel. Light grey.	4
0788011-24	OR 80 SB-24	Offset dish 80 cm pack 24 units. Galvanised steel. Light grey.	24 / 96



Serie OR

Steel offset dishes. OS Series

CODE	REFERENCE	DESCRIPTION	PACKAGING
0701105	OS 100 STB	Offset dish 100 cm pack 3 units, Galvanised steel. Light grey.	1
0701105-3	OS 100 STB-3	Offset dish 100 cm pack 3 units, Galvanised steel. Light grey.	3
0701105-PL	OS 100 STB-PL	Offset dish 100 cm pack 3 units, Galvanised steel. Light grey.	25/75
0701128	OS 150 G	Offset dish 150 cm. Gain: 10,7 GHz: 43,6 dB. 11,7 GHz: 44,3 dB. 12,7 GHz: 45.0 dB. Galvanised steel. Light grey.	1



OS 100 STB

OS 120 SAB

OS 150 G

LNC's eXcellento series

CODE	REFERENCE	DESCRIPTION	PACKAGING
0400321	eXcellento Black Single	Universal single type LNC with 55-65 dB gain and FR. 0.1	1 / 100
0400322	eXcellento Black Twin	LNC with 2 universal output Twin gain type 65 dB and FR. 0.1 dB.	55- 1 / 50
0400323	eXcellento Black Quad	LNC with 4 universal gain quad output 65 dB and FR. 0.1 dB.	55- 1 / 50
0400325	eXcellento Black Octo	LNC 8 gain universal output Octo type 55-65 dB and FR. 0.1 dB.	1 / 40
0400324	eXcellento Black Quattro	LNC with 4 separate outputs VL, VH, HL, HH Quattro type with 55-65 dB gain and FR. 0.2 dB.	1 / 50
0400320	eXcellento RED HQ Unicable DCSS	LNC in Unicable 2 or DCSS mode allows a maximum of 24 receptores + Wideband.	1 / 30



Black Single

Black Twin

Black Quad

Black Octo

Black Quattro

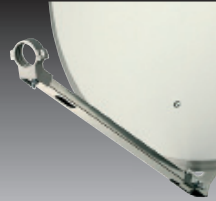
Dish Kit + LNC Single

CODE	REFERENCE	DESCRIPTION	PACKAGING
0780020-6	KIT-6	OR 58 SB + LNC eXcellento single (6 units)	24 / 96

20 years in the market is the guarantee of satellite dishes Fte maximal. Probably the best sellers thanks to of its easy assembly, performance and durability



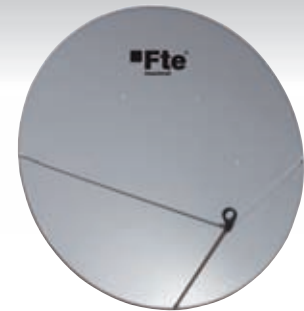
OR 58/80 SB



OS 100 STB



OS 120 SAB



OS 150 G

	OR 58 SB	OR 80 SB	OS 100 STB	OS 120 SAB	OS 150 G
Code	0785811	0788011	0701105	0701020	0701128
Description	60 cm satellite dish in beige steel	80 cm satellite dish in beige steel	Offset antenna 100 cm	Offset antenna 120 cm	Offset antenna 150 cm
Dimensions (Vert x Horiz)	580 x 510 mm	800 x 740 mm	980 x 900 mm	1100 x 1200 mm	1630 x 1500
Reflecting material	Galvanized steel	Galvanized steel	Galvanized steel	Galvanized steel	Galvanized steel
Support material	Galvanized steel	Galvanized steel	Galvanized steel	Galvanized steel	Galvanized steel
Support arm material	Aluminio	Aluminio	Galvanized steel	Galvanized steel	Galvanized steel
Reflector thickness	0.8 - 1.5 mm	0.8 - 1.5 mm	0.8 - 1.5 mm	0.8 - 1.5 mm	0.9 mm
Paint	Epoxi - Poliester	Epoxi - Poliester	Epoxi - Poliester	Epoxi - Poliester	Epoxi - Poliester
Color	RAL 7035 (Beige)	RAL 7035 (Beige)	RAL 7035 (Beige)	RAL 7035 (Beige)	RAL 7004 (Gris claro)
Frequency range	10,7 - 12,75 GHz	10,7 - 12,75 GHz	10,7 - 12,75 GHz	10,7 - 12,75 GHz	10,7 - 12,75 GHz
Gain	10,7 GHz 33.5 dB	36.5 dB	38.3 dB	40.8 dB	43.6 dB
	11,7 GHz 34.8 dB	37.3 dB	39.3 dB	41.5 dB	44.3 dB
	12,7 GHz 35.4 dB	38.0 dB	39.9 dB	42.5 dB	45.0 dB
Polarization	Linear / Circular	Linear / Circular	Linear / Circular	Linear / Circular	Linear / Circular
Azimuth adjustment range	0 - 360°	0 - 360°	0 - 360°	0 - 360°	0 - 360°
Elevation adjustment range	10 - 60°	10 - 60°	9 - 65°	5 - 75°	5 - 75°
Operational Winload	130 Km/h - 350 N 150 Km/h - 450 N	130 Km/h - 550 N 150 Km/h - 750 N	130 Km/h - 740 N 150 Km/h - 1020 N	Operational: 77 km/h Survival: 144 km/h	Operational: 80 Km/h Survival: 180 Km/h
Maximum support diameter	60 mm	60 mm	60 mm	60 mm	60 mm
Weight	2,5 Kg	4,4 Kg	8 Kg	16 Kg	24 Kg
Packing quantity	1 / 4 / 24	1 / 4 / 24	1 / 2 / 10	1 / 2 / 10	1 / 2 / 10

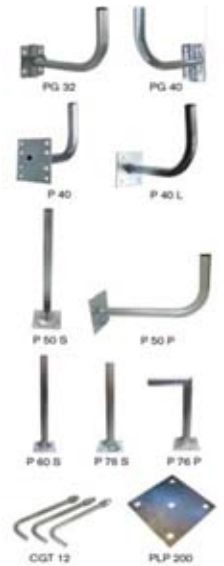
Monoblock Series

CODE	REFERENCE	DESCRIPTION	PACKAGING
0400462	Premium Mono block 6° Twin	LNC Monoblock 6° Twin. Gain 55-65 dB and F.R 0.2 Typ.	1 / 20
0400463	Premium Mono block 6° Quad	LNC Monoblock 6° Quad. Gain 55-65 dB and F.R 0.2 Typ.	1 / 20



Hot-galvanized supports for offset dishes

CODE	REFERENCE	DESCRIPTION	PACKAGING
9003070	PG 32	Wall / mast / rail. Ø32 mm. 100x100 mm. L:320 mm.	1 / 10
9003071	PG 40	Wall / mast / rail. Ø40 mm. 135x200mm. L:450 mm.	1 / 2
9003048	P 40	Wall / mast / rail. Ø40 mm. 120x90 mm. L:380 mm.	1 / 10
9003048-L	P 40 L	Wall. Ø 40 mm. 140x180 mm. Length 420 mm.	1 / 10
9003050	P 50 S	Floor. Ø 50 mm. 200x200 mm. Length 870 mm.	1
9003010	P 50 P	Wall. Ø 50 mm. 200x200 mm. Length 510 mm.	1
9004019	CGT 12	Threated hook	1 / 25
9003049	PLP 200	Plate for building in. 200 x 200 mm.	1
9003011	P 60 S	Floor. Ø 60 mm. 200x200 mm. Length 870 mm.	1
9003012	P 60 P	Wall. Ø 60 mm. 200x200 mm. Length 870 mm.	1
9003015	P 76 P	Wall. Ø 76 mm. 250x250 mm. Length 870 mm.	1
9003014	P 76 S	For Floor. Ø 76 mm. 250x250 mm. Length 870 mm.	1



LNC switches for masthead installation

CODE	REFERENCE	DESCRIPTION	PACKAGING
0702021	UMS 21	LNC switch with 2 inputs and 1 output.	1 / 10 / 100



Multifocus

CODE	REFERENCE	DESCRIPTION	PACKAGING
0701109	MF 1B	2 LNB multifocus from 6° to 9°	1 / 24
0400150	SMF 2	6° Multifocus Support	1 / 60



Compact Headends

RECEPTION

Sirius: Sirius series modular headboard

CODE	REFERENCE	DESCRIPTION	PACKAGING
2001814	S1814	Transmodulator with 8 x DVB-S/S2 tuner & 4 MUX DVB-T output.	1
2001818	S1818	Transmodulator with 8 x DVB-S/S2 tuner & 8 MUX DVB-T output.	1
2001822	S2222	Transmodulator with 2 x DVB-S/S2 2xCI->2x DVB-T.	1
2001830	PS-S3000	12Vdc-3.0A supply that allows parallel connection.	1
2001845	PS-S4500	12Vdc-4.5A supply that allows parallel connection.	1
2001800	CHR-SD	DIN rail chassis for 19" Rack.	1
2001801	CH-SD	1m DIN rail chassis for wall mounting.	1



ATLAS: Compact headend transmodulator

CODE	REFERENCE	DESCRIPTION	PACKAGING
2008604	ATLAS 64	Compact transmodulator headend with 4 physical inputs, 6 DVB-S/S2 tuners and 4 output muxes with service selection and 2 Flex CIs.	1 / 3



Programmable Headends

RECEPTION

Programable amplifier 32 filters

CODE	REFERENCE	DESCRIPTION	PACKAGING
2003411	MIND 32M	Programable amplifier 32 filters, 4 x (BIII, UHF), 1 FM, 1 AUX, 1 OUT TER, 1x TEST, G: 55 dB, (116 dBμV).	1 / 5
2003412	MIND 32S	Programable amplifier 32 filters, input 1x BIII-UHF, 3xUHF, 1 FM, 1 AUX, 1SAT, Outputs 1 TER+SAT, 1x TER, 1 TEST -30 dB. G:>55 dB (120 dBuV)	1 / 5





S1814

PS-4500

Transmodulation headend SIRIUS

	S1814	S1818
Code	2001814	2001818
Description	Transmodulator with 8 x DVB-S/S2 tuner & 4 MUX DVB-T output.	Transmodulator with 8 x DVB-S/S2 tuner & 8 MUX DVB-T output
Inputs/Outputs	8/4	8/8
Input RF		
Number of connectors input RF	1	1
Frequency range	950-2150 MHz	
Level/Impedance	55-95 dB μ V / 75 Ω	
Input return loss	≥ 10 dB	
Loop through frequency range / Loss	950-2150 MHz / ≤ 1.5 dB	
LNB Power /Control	0/13/18V tono 22 KHz, 500 mA máximo. DiseqC 1.0, EN50494, EN50607	
Standard	DVB-S/S2/S2X*	
Modulation	QPSK, 8PSK, APSK 8/16/32	
Symbol rate	2 – 45 Ms/s	
Output RF		
Standard	DVB-T	
Modulation	QPSK, QAM16, QAM64	
Frequency range	170-230MHz, 470-862 MHz	
Channel allocation, adjac	4	4+4
Level/Impedance	90 \pm 2 dB μ V / 75 Ω	
TS bit rate	< 31 Mbit/s	
MER	≥ 35 dB	
Channel bandwidth	7 MHz, 8 MHz	
Transmission mode	2K	
Guard interval	1/4, 1/8, 1/16, 1/32	
Code rate	1/2, 2/3, 3/4, 5/6, 7/8	
Return Loss	≥ 10 dB	
Total output level adjustment range	0 - -15 dB steps 1 dB	
MIX frequency range / Loss	45-862 MHz / ≤ 2.5 dB	
General		
Management port	Standard IEEE802.3 10/100 Base T	
Supply voltage	12 V \pm 1V	
Current consumption without external load	1.0 A	1.2 A
Current consumption with maximum external load	2.0 A	2.2 A
Dimensions / Weigth (with packaging)	63x198x112 mm / 1.26 Kg	
Code EAN	8436545307243	8436545307250

* Supports physical layer scrambling (PLS) and multiple input streams (MIS)

MIND Programmable Amplifiers with **PROFESSIONAL** mentality



Mind 32M

The Mind series now
more complete



Mind 32S

High output level for medium and
large installations



	MIND 32M	MIND 32S
Code	2003411	2003412
Description	Programmable amplifier 32 filters Medium	Programmable amplifier 32 filters (BIII / UHF)
Inputs	FM: 88-108 MHz - AUX: 47-862 MHz BIII-UHF 1..3: 174-230 MHz/470-862 MHz 32 programmable filters with bandwidth 1 channel (7 MHz* or 8MHz**). BIII-UHF 4: 174-230 MHz/470-862 MHz 32 programmable filters with bandwidth 1 channel 1 canal por filtro (7 MHz* o 8MHz**). The filters are share with the other BIII-UHF inputs.	FM: 88-108 MHz - AUX: 47-862 MHz DAB mode: 174 – 230 MHz BIII-UHF mode: 174 – 230 MHz/470-862 MHz DAB mode: Use 8 programmable filters available. BIII-UHF mode: 32 programmable filters with BW 1 channel (7 MHz* ó 8MHz*) The filters are share with the other UHF inputs.
Input level range	1: FM: 40-90 dB μ V 1: AUX: 60-90 dB μ V 1: BIII-DAB/UHF: 50-100 dB μ V	1: FM: 40-90 dB μ V 1: AUX: 60-90 dB μ V 1: BIII-DAB/UHF: 50-100 dB μ V 1: SAT: 40-90 dB μ V
Outputs	1: TER 1: TEST (-30 dB)	1: TER + SAT 1: TER 1: TEST (-30 dB)
Gain	1: FM: 35/25 dB*** 1: AUX: 22/10 dB*** 1: BIII-UHF: > 55 dB	1: FM: 40/30 dB*** 1: AUX: 10/20 dB*** 1: BIII-DAB/UHF: > 55 dB 1: SAT: 40 dB
Regulation	1: FM: 20 dB 1: AUX: 0..10 dB o 0..20 dB *** 1: BIII-UHF: 0..20 dB + AGC	1: FM: 20 dB 1: AUX: 20 dB 1: BIII-DAB/UHF: 0..20 dB + AGC 1: SAT: 20 dB
Output level	1: FM: 119 dB μ V 1: AUX: 113 dB μ V 1: BIII-UHF: 116 dB μ V	1: FM: 120 dB μ V 1: AUX: 112 dB μ V 1: BIII-DAB/UHF: 120 dB μ V 1: SAT: 120 dB μ V
Feeding LNCs	0/13/18VDC – 0/22KHz / 300 mA	0/13/18VDC – 0/22KHz / 300 mA
Preamplifiers feeding	In all UHF inputs 0/12/24 VDC (80mA maximum per Input). Total current for all inputs is 200 mA.	In all UHF inputs 0/12/24 VDC (80mA maximum per Input). Total current for all inputs is 200 mA.
Equalization	TER: 0 a -9 dB en pasos de 1 dB, SAT: 0/9 \pm 2 dB	TER: 0 a -9 dB en pasos de 1 dB, SAT: 0/9 \pm 2 dB
Selectivity filters BIII & UHF (\pm 1MHz)	BIII/UHF: > 35 dB	BIII/UHF: > 35 dB
LTE / 5G filtering	Yes, using the selectivity extreme of the programmable filters	Yes, using the selectivity extreme of the programmable filters
Programming	Through integrated programmer with 5 buttons and 2-line LCD display of 16 characters	Through integrated programmer with 5 buttons and 2-line LCD display of 16 characters
Digital channel conversion	Yes	Yes
Auto scan channels in UHF band	Yes	Yes
LCD language selection	Yes, Spanish and English	Yes, Spanish and English
Supply	100-254 Vac 50-60 Hz	100-254 Vac 50-60 Hz
Power consumption	22 W	25 W
Dimensions	265 mm x 190 mm x 52 mm	265 mm x 190 mm x 52 mm
EAN Code	8436545306727	8436545306468

Multiband Headends

RECEPTION

Multiband amplifier MAG

CODE	REFERENCE	DESCRIPTION	PACKAGING
0301345	MAG 2134	Headend 2 IN FM+B3 / UHF G35 dB / 115 dB	20
0301346	MAG 4147	Headend 4 IN FM / BIII / 2x UHF G47 dB / 121 dB	20

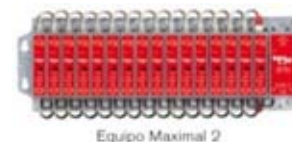


Headend Amplification

RECEPTION

Amplifiers Maximal 2: special bands. Maximal 2 Series

CODE	REFERENCE	DESCRIPTION	PACKAGING
9001202	C 522	Single-channel FM amplifier, 40 dB (123.5 dBμV).	1
9001207	C DAB	Single-channel DAB amplifier, 45 dB (123 dBμV).	1



Equipo Maximal 2

Amplifiers monochannel Maximal 2: UHF

CODE	REFERENCE	DESCRIPTION	PACKAGING
9001214-xx	C 604-xx	1 x UHF single-channel amplifier, 50 dB (122 dBμV).	1



C 604

PS2 1600 A

Power supplies. PS2 A Series

CODE	REFERENCE	DESCRIPTION	PACKAGING
9001251	PS-15-2000	Power supplies, 15 VDC, 1500 mA.	1 / 6

Accessories for modules. Maximal and Maximal 2A Series

CODE	REFERENCE	DESCRIPTION	PACKAGING
9001012	PMF	Link mixing quick F/F.	5 / 100



PMF

Frames and cabinets for Maximal 2 Series

CODE	REFERENCE	DESCRIPTION	PACKAGING
9001151	MAX CH 6	Frames / Enlargement 6 pcs	1 / 50



MAX CH 6

Indoor amplifiers, mast, line and multiband amplifiers

RECEPTION

MATV indoor amplifiers

CODE	REFERENCE	DESCRIPTION	PACKAGING
9921220	TAL 1220 G	Indoor amplifiers 1 In (VHF+UHF) - 2 Outs, G: 20 dB (103 dBμV). 5G Ready.	1 / 30



TAL 1220 G

CATV indoor amplifiers

CODE	REFERENCE	DESCRIPTION	PACKAGING
9901122-R	HCA 1122-R	Line amplifier 1In, 1 Out 85-862 MHz G:22 dB B. Ret. 5-65 MHz G:-2 (111 dBuV).	1 / 10 / 60
0302265	HCA ZM 20-65	Amplifier 20 dB - Ret. 5-65 MHz (115 dBuV).	1 / 12



HCA 1122-R

HCA ZM 20-65

Line amplifier

CODE	REFERENCE	DESCRIPTION	PACKAGING
0304024	HLA-22	Line amplifier SAT and TER. G.TER 35 dB SAT 40 dB Max output level: TER: 118 dBμV SAT: 120 dBμV.	1 / 20
0304023	HLA ST	Satellite and terrestrial line amplifier. Gain: 30-34 dB Max output level: TER: 115 dBμV / SAT: 120 dBμV.	1 / 20
0300315	HCA 42 P	Line amplifier 1 Input-1 Output + 1 Test, G:42 dBμV. Max output level 129 dBμV.	1 / 6



HLA-ST

HCA 42P

HLA 22

SMATV line amplifier

CODE	REFERENCE	DESCRIPTION	PACKAGING
0703009	BNV 2000	Plug-in line amplifier 950-2300 MHz / G: 16-24 (107 dBμV).	1 / 10



Programmable masthead amplifiers

CODE	REFERENCE	DESCRIPTION	PACKAGING
9002256	M-3200	32 Filter VHF/UHF Auto programmable intelligent mast amplifier.	1 / 50
9002256-KIT	KIT M-3200	KIT M-3200 Intelligent mast amplifier + LPS 1240	1 / 50



Masthead amplifiers

CODE	REFERENCE	DESCRIPTION	PACKAGING
9002255	M 2020	Mast amplifier with 1 UHF input. Gain: 36 dB. Output level:110 dBμV.	1 / 20
9000345	LG 262	Mast amplifiers with 2 VHF/UHF inputs. Gain: 24 dB. Output level:105 dBμV.	1 / 20



Configurable masthead amplifiers

CODE	REFERENCE	DESCRIPTION	PACKAGING
9003541	AMC 210 Lte	Mast amplifier 1 VHF / 3 UHF, G: 18 dB / 26 dB (110 dBμV). Lte Ready.	1 / 5 / 40



Power supplies LPS series

CODE	REFERENCE	DESCRIPTION	PACKAGING
9901240	LPS 1240	Power supply, 12 VDC, 400 mA. 2 outputs.	1 / 20
9902410	LPS 2410	Power supply, 24 VDC, 100 mA. 2 outputs.	1 / 20

Shielded mixers masts. MF Series

CODE	REFERENCE	DESCRIPTION	PACKAGING
9000201	MF 201	Mixer 1 VHF / 2 UHF, insertion loss 1.0 dB / 4.5 dB.	1 / 20
9000203	MF 203	Mixer 1 TER / 2 SAT insertion loss 1,5 dB / 4 dB.	1 / 20



Outdoor box

CODE	REFERENCE	DESCRIPTION	PACKAGING
0990501	OUT BOX	Outdoor box for mast. 115.3 x 137.9 x 53.1 mm	1 / 50



Coaxial Cables

DISTRIBUTION

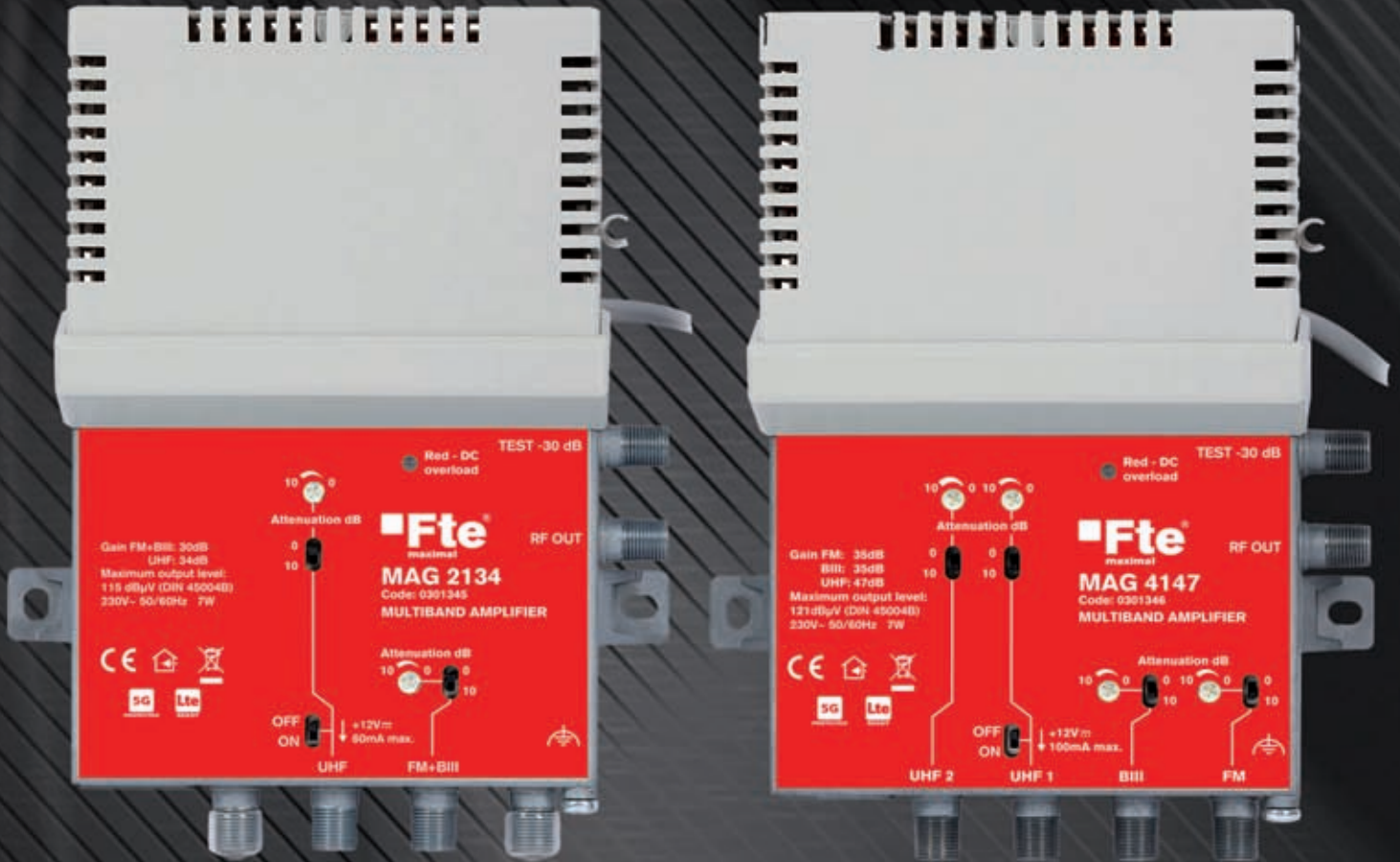
Coaxial cables GOLD 6,8 mm with inner cooper

CODE	REFERENCE	DESCRIPTION	PACKAGING
0703629	K 290 WD GOLD	White LSZH coaxial cable 1.13 mm Cu.+128 CCA wires 100m. CPR-Dca-s1,d1,a1	1 / 4 / 128
0703630	K 290 WD3 GOLD	White LSZH coaxial cable 1,13 mm Cu.+128 wires CCA. 300m. CPR-Dca-s1,d1,a1	1 / 4 / 128
0703429	K 290 W GOLD	White LSZH coaxial cable 1,13 mm Cu.+128 wires CCA. 100m. CPR-Fca	1 / 4 / 128
0703625	K 250 WD GOLD	White LSZH coaxial cable 1,0 mm Cu.+ 96 wires CCA.100m. CPR-Dca-s1, d1, a1	1 / 4 / 128
0703454	K 290 B GOLD	Black PE coaxial cable 1,13 mm Cu.+128 wires CCA.100m. CPR-Fca	1 / 4 / 128





Headends



Multiband amplifier MAG 2134 & MAG 4147

High gain and good output level

HLA-22: Line amplifier adapted to ICT2 regulations



High gain and output level
Slope and attenuation adjustments
ensure the necessary level
throughout the distribution

M-3200

The smartest mast amplifier

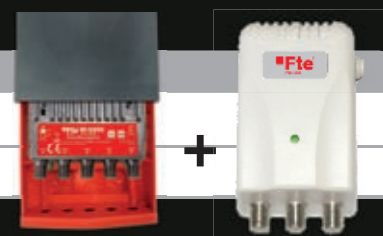


M-3200

Code	9002256
Description	Smart Mast amplifier with 32 filters VHF/UHF
Inputs	4 VHF/UHF
Input Frequency range	VHF: 174-240 MHz UHF: 470-694 MHz
Input level	40-108 dB μ V
Input Return loss	> 10 dB
Output	1
Output frequency	174-240 MHz - 470-862 MHz
Output level	91-93 dB μ V
Output Return Loss	> 10dB
Gain regulation	Auto (> 55 dB)
Channels filters	32 Selective filters. (The number of filter used depend of the band scan)
Programming	Automatic band scan after connect the power.
Dip switch for 4G/5G band reuse	When it is on can use the channel from 49-69(695-862 MHz) (Reallocated channels)
Status Led	Blink when it is scanning channels and Solid blue color when it is working in normal operation.
Supply voltage	12 Vcc
Current consumption	350 mA
Dimensions without outdoor box	90 x 65 x 26mm
Outdoor box	Included

KIT M-3200

Code	9002256-KIT
Description	KIT M-3200 Smart mast amplifier + LPS1240



Coaxial cables with 10,3 mm

CODE	REFERENCE	DESCRIPTION	PACKAGING
0703424	K 403 B3	Black PE coaxial cable 1,63 mm CCS + 128 wires Al. 300m. CPR-Fca	1 / 30



Coaxial cables with 6,8 mm

CODE	REFERENCE	DESCRIPTION	PACKAGING
0703608	K 290 WD	White LSZH coaxial cable 1,13 mm CCS+128 wires Al. 100m. Dca-s1, d1, a1	1 / 4 / 128
0703408	K 290 W	White PVC coaxial cable 1,13 mm CCS + 128 wires Al. 100m. CPR-Fca	1 / 4 / 128
0703410	K 290 W3	White PVC coaxial cable 1,13 mm CCS + 128 wires Al. 300m. CPR-Fca	1 / 40
0703409	K 290 B	Cable coaxial PE negro 1,13 mm CCS + 128 wires Al. 100m. CPR-Fca	1 / 4 / 128
0703411	K 290 B3	Black PE coaxial cable 1,13 mm CCS + 128 wires Al. 300m. CPR-Fca	1 / 4 / 128
0703121	K 200 E	White PVC coaxial cable 1,0 mm CCS + 46 wires Al. 100m. CPR-Fca	1 / 4 / 128



Coaxial cables with 5 mm

CODE	REFERENCE	DESCRIPTION	PACKAGING
0703400	K 121 W	White PVC coaxial cable 0,8 mm CCS + 96 wires Al. 100m. CPR-Fca	1 / 4 / 196



Connectors and adaptadors

DISTRIBUTION

Connectors IEC 9,5 mm

CODE	REFERENCE	DESCRIPTION	PACKAGING
9001020-W	FST-W	Connector IEC 9,5 mm male shielded bent white.	10 / 100
9001021-W	FBV-W	Connector IEC 9,5 mm female shielded bent white.	10 / 100



Pluggable splitters IEC connector

CODE	REFERENCE	DESCRIPTION	PACKAGING
9001007	VE 1	Splitter female / male / male shielded IEC 9.5 mm	1 / 20 / 500
9001008	VE 2	Splitter F male / female shielded IEC 9.5 mm	1 / 20 / 500



Loads 75 Ohm and injectors

CODE	REFERENCE	DESCRIPTION	PACKAGING
0703018	AW 75 F	Load type F 75 Ohm.	25/250/2000
9002030	KIC 5	5 VDC Current Injector Kit.	1



F screwed connectors

CODE	REFERENCE	DESCRIPTION	PACKAGING
9001023-50	CF 121-50	F connector for K 121.	50/1000
0703016	CF 125	F connector for K-125 and K 2xx series.	25/25/1500
0703013	CF 47	F connector for K 300.	25/900
9001028	CF 43	F connector for K 403.	25/900
0703010	PCI	Water proof Protector	10/50/2000



Coaxial cables Fte maximal

The best guarantee for your installation

Coaxial cables with COPPER conductor

CPR Dca

	K 250 WD GOLD	K 290 WD GOLD / WD3 GOLD	K 290 W GOLD	K 290 B GOLD
Code	0703625	0703629 / 0703630	0703429	0703454
Inner conductor (mm) Ø	1,0 Cu	1,13 Cu	1,13 Cu	1,13 Cu
Dielectric (mm) Ø	4,6 PE Physical foam	4,6 PE Physical foam	4,6 PE Physical foam	4,6 PE Physical foam
Foil material	Al / Pet / Al	Al / Pet / Al	Al / Pet / Al	Al / Pet / Al
Braiding material	CCA (copper color)	CCA	CCA	AL
Number of wires (braiding)	96	128	128	128
Screening factor	> 86 dB	> 90 dB	> 90 dB	> 90 dB
Outer jacket (mm) Ø	6,8 LSZH white	6,8 LSZH white	6,8 PVC white	6,8 PE black
Nominal attenuation (dB / 100 m)				
47 MHz	4,8	3,7	3,7	3,7
175 MHz	8,3	6,7	6,7	6,7
470 MHz	13,5	11,2	11,2	11,2
862 MHz	18,8	16,2	16,2	16,2
950 MHz	19,9	17,5	17,5	17,5
1350 MHz	24,0	21,8	21,8	21,8
1750 MHz	27,5	25,0	25,0	25,0
2150 MHz	30,9	28,2	28,2	28,2
Presentation	100 m Reel cardboard	100 m / 300 m wooden cardboard	100 m Reel cardboard	100 m Reel cardboard
Reaction to fire	CPR-Dca-s1, d1, a1	CPR-Dca-s1, d1, a1	CPR-Fca	CPR-Fca



K 250 WD GOLD



K 290 WD GOLD



K 290 W GOLD



K 290 B GOLD

Coaxial cables with CCS conductor

	K 290 WD	K 121 W	K 403 B3	K 200 E	K 290 W / W3	K 290 B / B3
Code	0703608	0703400	0703424	0703121	0703408 / 0703410	0703409 / 0703415-3
Inner conductor (mm) Ø	1,13 CCS	0,8 CCS	1,63 CCS	1,0 CCS	1,13 CCS	1,13 CCS
Dielectric (mm) Ø	4,6 PE	3,54	7,24	4,6 PE	4,6 PE	4,6 PE
Foil material	Al / Pet / Al	Al / Pet / Al	Al / Pet / Al	Al / Pet	Al / Pet / Al	Al / Pet / Al
Braiding material	AL	AL	AL	AL	AL	AL
Number of wires (braiding)	128	96	128	48	128	128
Screening factor	> 90 dB	> 85 dB	> 90 dB	> 70 dB	> 90 dB	> 90 dB
Outer jacket (mm) Ø	6,8 LSZH white	5,0 PVC white	10,3 PE black	6,8 PVC white	6,8 PVC white	6,8 PVC black
Nominal attenuation (dB / 100 m)						
47 MHz	3,7	5,9	2,9	4,8	3,7	3,7
175 MHz	6,7	10,7	5,2	8,3	6,7	6,7
470 MHz	11,2	17,3	8,5	13,5	11,2	11,2
862 MHz	16,2	23,9	12,3	18,8	16,2	16,2
950 MHz	17,5	25,2	12,9	19,9	17,5	17,5
1350 MHz	21,8	30,4	15,8	24,0	21,8	21,8
1750 MHz	25,0	34,8	18,4	27,5	25,0	25,0
2150 MHz	28,2	38,9	20,7	30,9	28,2	28,2
Presentation	100 m wooden cardboard	100 m wooden cardboard	300 m wooden cardboard	100 m wooden drum	100 m / 300 m wooden cardboard	100 m / 300 m wooden cardboard
Reaction to fire	CPR-Dca-s1, d1, a1	CPR-Fca	CPR-Fca	CPR-Fca	CPR-Fca	CPR-Fca



K 290 WD



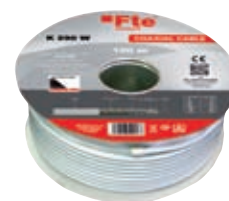
K 121 W



K 403 B3



K 200 E



K 290 W



K 290 B

Quick F connectors

CODE	REFERENCE	DESCRIPTION	PACKAGING
0703017	CFR 125	Screwed F connector for cables K 2xx series	50 / 1800
0033030-R	FR 48	F connector to crimp for cable K 2xx series	10



Connectors high quality

CODE	REFERENCE	DESCRIPTION	PACKAGING
0703025	FHQ - T	Screwed F connector for K 2xx series.	50 / 1800



Compression F connector

CODE	REFERENCE	DESCRIPTION	PACKAGING
0703032	CFC 58	Compression F connector for K-121 series.	25 / 900
0703034	CFC 11	Compression F connector for K 403.	15 / 540
0703030	CFC 6	Compression F connector for K 2xx series and K 300.	25 / 900
0703037	CFC 6 TRI	Compression F connector for coaxial cable K 3xx series.	100 / 2500



Tools for cables

CODE	REFERENCE	DESCRIPTION	PACKAGING
0033006	HC 5	Tool to mount CFC 6, CFC 58 and CFC 6 TRI.	1 / 40
0033007	HC 11	Tool to mount CFC 11 connectors.	1 / 30



Cable peeler

CODE	REFERENCE	DESCRIPTION	PACKAGING
0033002	HC 2	Coaxial cable peeler 5 - 7.5 mm	1 / 20 / 100



F adapters

CODE	REFERENCE	DESCRIPTION	PACKAGING
0703007-01	FIX FBU-FBU	FBU-FBU with washer and nut.	1
0034081	FST-IEC/ST	Adapter F male / IEC 9,5 mm male.	25 / 250
0034083	FST-IEC/BU	Adapter F male / IEC 9,5 mm female.	25/250/1000
0703007	FBU-FBU	Adapter F female / F female.	25 / 900
0703021	FST-FST	Adapter F male / F male.	25 / 900
0703024	FST-FBU	Adapter F male / F hembra acodado.	25 / 900
0703008	FBU-BST	Adapter F female / BNC female.	30 / 1080
0703110	FBU-FSTQ	Adapter Quick F male / F female.	50 / 1800
0902022	IEC/ST-FBU	Adapter F female / IEC 9,5 mm male.	50 / 1800
0902016	IEC/BU-FBU	Adapter F female / IEC 9,5 mm female.	50 / 1800



Adapters IEC 9,5 mm

CODE	REFERENCE	DESCRIPTION	PACKAGING
9001036	AMM	Adaptador IEC 9,5 mm macho / macho.	25 / 1000
9001037	AHH	Adaptador IEC 9,5 mm hembra / hembra.	25 / 1000



Lte extenders with connector IEC 9,5 mm Classe A

CODE	REFERENCE	DESCRIPTION	PACKAGING
0901005	AKB 150	Lte extenders 1,50 m IEC 9,5 mm male / female.	1 / 10 / 120
0901010	AKB 250	Lte extenders 2,50 m IEC 9,5 mm male / female.	1 / 12 / 96
0901020	AKB 500	Lte extenders 5.0 m IEC 9,5 mm male / female.	1 / 12 / 96
0901040	AKS 250	Lte extenders 2,50 m Tipo F male.	1 / 12 / 60
0901045	AKS 500	Lte extenders 5.0 m Tipo F male.	1 / 12 / 60
0901068	AKB 500 L	Lte extenders 5,0m IEC 9,5 mm male / female.	1 / 12 / 60



Double shielded extenders

CODE	REFERENCE	DESCRIPTION	PACKAGING
0901069	AKS 150 L	Lte extenders 1,50 m F male / F male.	1 / 12 / 60
0901070	AKS 250 L	Lte extenders 2,50 m F male / F male.	1 / 5 / 60
0901071	AKS 500 L	Lte extenders 5 m F male / F male.	1 / 5 / 40
0901072	AKSS 150 L	Lte extenders 1,50 m F male / IEC male.	1 / 12 / 96



Attenuators. Variables with F connector

CODE	REFERENCE	DESCRIPTION	PACKAGING
9002050	DS 2150 F	Attenuator variable 47/2150 MHz straight f	1 / 20
9001050	DSA 75 F	Adjustable attenuator 0-20 dB. with quick F male / F female connector.	1 / 20



Attenuators. Fixed from 47 to 2150 MHz

CODE	REFERENCE	DESCRIPTION	PACKAGING
9002052	ATE 06	Fixed attenuator 6 dB from 47 to 2150 MHz.	1/10/250/500
9002053	ATE 10	Fixed attenuator 10 dB from 47 to 2150 MHz.	1/10/250/500



DC Voltage blocker F

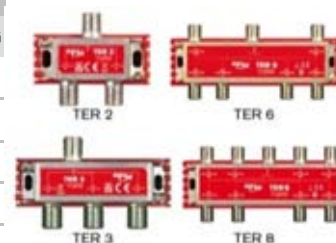
CODE	REFERENCE	DESCRIPTION	PACKAGING
9002051	DCB	DC voltage blocker F male / F female	10 / 250 / 500

Distribution elements

DISTRIBUTION

Splitters 5-1000 MHz A class. F connection

CODE	REFERENCE	DESCRIPTION	PACKAGING
0970002	TER 2	Splitter 5 - 1000 MHz, F connector, 2 outputs, 3,5 dB.	1 / 10 / 120
0970003	TER 3	Splitter 5 - 1000 MHz, F connector, 3 outputs, 6,0 dB.	1 / 10 / 120
0970004	TER 4	Splitter 5 - 1000 MHz, F connector, 4 outputs, 7,0 dB.	1 / 10 / 120
0970006	TER 6	Splitter 5 - 1000 MHz, F connector, 6 outputs, 10,0 dB.	1 / 5 / 60
0970008	TER 8	Splitter 5 - 1000 MHz, F connector, 8 outputs, 10,5 dB.	1 / 5 / 60



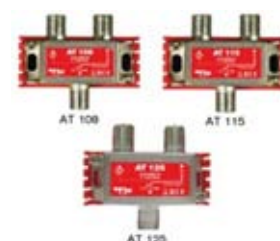
Splitters 5-2400 MHz A class. F connection

CODE	REFERENCE	DESCRIPTION	PACKAGING
0980002	AS 2	Splitter 5 - 2400 MHz, F connector, 2 outputs, 3,5 dB.	1 / 10 / 120
0980003	AS 3	Splitter 5 - 2400 MHz, F connector, 3 outputs, 6,9 dB.	1 / 10 / 120
0980004	AS 4	Splitter 5 - 2400 MHz, F connector, 4 outputs, 8,7 dB.	1 / 10 / 120
0980006	AS 6	Splitter 5 - 2400 MHz, F connector, 6 outputs, 13,5 dB.	1 / 5 / 60
0980008	AS 8	Splitter 5 - 2400 MHz, F connector, 8 outputs, 15,5 dB.	1 / 5 / 60



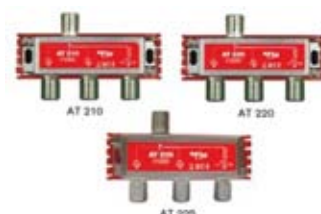
1 way TAPs, 5-2400 MHz A-class. F connection

CODE	REFERENCE	DESCRIPTION	PACKAGING
0980108	AT 108	1-way tap 5 - 2400 MHz, F connector, 8 dB.	1 / 10 / 120
0980110	AT 110	1-way tap 5 - 2400 MHz, F connector, 10 dB.	1 / 10 / 120
0980112	AT 112	1-way tap 5 - 2400 MHz, F connector, 12 dB.	1 / 10 / 120
0980115	AT 115	1-way tap 5 - 2400 MHz, F connector, 15 dB.	1 / 10 / 120
0980120	AT 120	1-way tap 5 - 2400 MHz, F connector, 20 dB.	1 / 10 / 120
0980125	AT 125	1-way tap 5 - 2400 MHz, F connector, 25 dB.	1 / 10 / 120



2 way TAPs, 5-2400 MHz A-class. F connection

CODE	REFERENCE	DESCRIPTION	PACKAGING
0980210	AT 210	2-ways tap 5 - 2400 MHz, F connector, 10 dB.	1 / 10 / 120
0980212	AT 212	2-ways tap 5 - 2400 MHz, F connector, 12 dB.	1 / 10 / 120
0980215	AT 215	2-ways tap 5 - 2400 MHz, F connector, 15 dB.	1 / 10 / 120
0980220	AT 220	2-ways tap 5 - 2400 MHz, F connector, 20 dB.	1 / 10 / 120
0980225	AT 225	2-ways tap 5 - 2400 MHz, F connector, 25 dB.	1 / 10 / 120
0980230	AT 230	2-ways tap 5 - 2400 MHz, F connector, 30 dB.	1 / 10 / 120



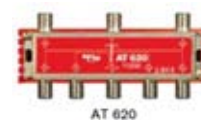
4 way TAPs, 5-2400 MHz A-class. F connection

CODE	REFERENCE	DESCRIPTION	PACKAGING
0980412	AT 412	4-ways tap 5 - 2400 MHz, F connector, 12 dB.	1 / 10 / 120
0980415	AT 415	4-ways tap 5 - 2400 MHz, F connector, 15 dB.	1 / 10 / 120
0980420	AT 420	4-ways tap 5 - 2400 MHz, F connector, 20 dB.	1 / 10 / 120
0980425	AT 425	4-ways tap 5 - 2400 MHz, F connector, 25 dB.	1 / 10 / 120
0980430	AT 430	4-ways tap 5 - 2400 MHz, F connector, 30 dB.	1 / 10 / 120



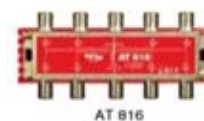
6 way TAPs, 5-2400 MHz A-class. F connection

CODE	REFERENCE	DESCRIPTION	PACKAGING
0980616	AT 616	6-ways tap 5 - 2400 MHz, F connector, 16 dB.	1 / 5 / 60
0980620	AT 620	6-ways tap 5 - 2400 MHz, F connector, 20 dB.	1 / 5 / 60
0980625	AT 625	Derivador de 6 vías 5 - 2400 MHz conector F, 25 dB.	1 / 5 / 60



8 way TAPs, 5-2400 MHz A-class. F connection

CODE	REFERENCE	DESCRIPTION	PACKAGING
0980816	AT 816	8-ways tap 5 - 2400 MHz, F connector, 16 dB.	1 / 5 / 60
0980825	AT 825	8-ways tap 5 - 2400 MHz, F connector, 25 dB.	1 / 5 / 60



PAU splitter 5-2400 MHz. F connection

CODE	REFERENCE	DESCRIPTION	PACKAGING
0981004	PAU-4 S	PAU Splitter 5 - 2400 MHz, F connector, 4 outputs.	1 / 5 / 10 / 60
0981005	PAU-5 S	PAU Splitter 5 - 2400 MHz, F connector, 5 outputs.	1 / 5 / 10 / 60
0981006	PAU-6 S	PAU Splitter 5 - 2400 MHz, F connector, 6 outputs.	1 / 5 / 10 / 60



Inductive outlets 5-1000 MHz with clamp

CODE	REFERENCE	DESCRIPTION	PACKAGING
0500075	ATS 75	Inductive outlet 5 - 1000 MHz with clamp.	1 / 10 / 120



Closed outlets 5-2400 MHz. AOQ Series

CODE	REFERENCE	DESCRIPTION	PACKAGING
0510090	AOQ 90 SC	Final shielded inductive outlet p.c. 3 connectors.	1 / 10 / 120
0510790	AOQ 790 C	Outlet 5-790 / 950 - 2400 MHz closed end with 2 connectors.	1 / 10 / 120



Inductive outlets 5-2400 MHz with clamp. AO Universal series

CODE	REFERENCE	DESCRIPTION	PACKAGING
0500087	AO 870	Final outlet IN-TV: 5-862 Mhz // IN-SAT: 950-2400 Mhz.	1 / 10 / 120
0500003-U	AO 3U	Final outlet 3 dB in bypass. IN-TV: 5-2400 Mhz // IN-SAT: 5-2400 Mhz.	1 / 10 / 120
0500009-U	AO 9U	Intermediate outlet 9 dB in bypass. IN-TV: 5-2400 Mhz // SAT: 5-2400 Mhz.	1 / 10 / 120
0500015-U	AO 15 U	Intermediate outlet 15 dB in bypass. IN-TV: 5-2400 Mhz // SAT: 5-2400 Mhz.	1 / 10 / 120
0500019-U	AO 19 U	Intermediate outlet 19 dB in bypass. IN-TV: 5-2400 Mhz // SAT: 5-2400 Mhz.	1 / 10 / 120



Choose the format you prefer:

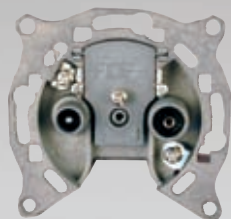
- Opened or closed chassis
- Quick or screwable connection
- With LTE filter at 790 MHz or without filter

Inductive outlets 5-2400 MHz with clamp

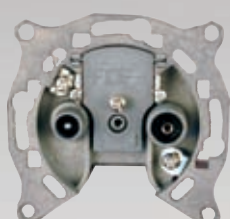
	AO 3U	AO 9U	AO 15U	AO 19U	AO 870
Code	0500003-U	0500009-U	0500015-U	0500019-U	0500087
Frequencies	IN-TV: 5-862 MHz IN-SAT: 950-2400 MHz	IN-OUT: 5-2400 MHz IN-TV: 5-2400 MHz IN-R: 5-2400 MHz	IN-OUT: 5-2400 MHz IN-TV: 5-2400 MHz IN-R: 5-2400 MHz	IN-OUT: 5-2400 MHz IN-TV: 5-2400 MHz IN-R: 5-2400 MHz	IN-TV: 5-862 MHz IN-SAT: 950-2400 MHz
IN-OUT loss	-	5-300: 3 dB 300-862: 3 dB 950-2400: 3,2 dB	5-300: 1,5 dB 300-862: 1,8 dB 950-2400: 2,0 dB	5-300: 1,3 dB 300-862: 1,5 dB 950-2400: 2,0 dB	-
Insertion loss	IN-TV: 5-300: 3,6 dB IN-TV: 300-862: 3,7 dB IN-TV: 950-2150: 6,2 dB IN-SAT: 5-300: 4,5 dB IN-TV: 300-862: 3,7 dB IN-TV: 950-2150: 6,6 dB	IN-TV: 5-300: 9,5 dB IN-TV: 300-862: 9,0 dB IN-TV: 950-2400: 9,5 dB IN-R: 5-300: 10,4 dB IN-TV: 300-862: 10,2 dB IN-TV: 950-2400: 12,2 dB	IN-TV: 5-300: 14,6 dB IN-TV: 300-862: 14,0 dB IN-TV: 950-2400: 14,0 dB IN-R: 5-300: 14,8 dB IN-TV: 300-862: 14,5 dB IN-TV: 950-2400: 16,5 dB	IN-TV: 5-300: 18,5 dB IN-TV: 300-862: 18,0 dB IN-TV: 950-2400: 19,0 dB IN-R: 5-300: 18,7 dB IN-TV: 300-862: 18,8 dB IN-TV: 950-2400: 22,9 dB	IN-TV: 5-300: < 2 dB IN-TV: 300-862: < 2 dB IN-TV: 950-2150: < 2 dB IN-SAT: 5-300: < 3 dB IN-TV: 300-862: < 3 dB IN-TV: 950-2150: < 3 dB
Installation type	Final cascade	Cascade	Cascade	Cascade	Final derivation
Current pass	IN-SAT	IN-R	IN-R	IN-R	IN-SAT

Inductive outlets 5-1000 MHz & 5-2400 MHz

	ATS 75	AOQ 790 C	AOQ 90 SC
Code	0500075	0510790	0510090
Frequencies	IN-TV: 5-80 / 120-1000 MHz IN-R: 87-108 MHz	IN-TV: 5-862 MHz IN-SAT: 950-2400 MHz	IN-TV: 5-70 / 120-862 MHz IN-R: 87,5 - 108 MHz IN-SAT: 950 - 2400 MHz
Insertion loss	IN-TV: < 1 dB IN-R: < 2 dB	IN-TV: < 2 dB IN-SAT: < 3 dB	IN-TV: < 3 dB IN-R: < 2 dB IN-SAT: < 2 dB
Connectors type	IEC 9,5 mm male IEC 9,5 mm female	IEC 9,5 mm male IEC 9,5 mm female F	IEC 9,5 mm male IEC 9,5 mm female F
Insertion type	Clamp	Fast connexion	Fast connexion
Installation type	Final derivation	Final derivation	Final derivation
Current pass	IN-SAT	IN-SAT	IN-SAT



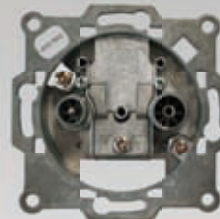
ATS 75



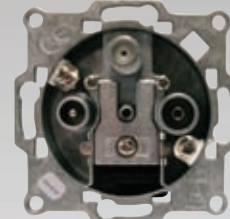
AO 870



AO 9U



AOQ 790C



AOQ 90 SC

Covers and accessories standards

CODE	REFERENCE	DESCRIPTION	PACKAGING
9001076	MP 76-BL	Cover 2 connectors.	1 / 30 / 240
0034128	ABV 91	White cover 3 connectors.	1 / 30 / 240
0504129-BL	APS 75	White surface accessory.	1 / 30 / 240



Mixers/Unmixers SAT/TER

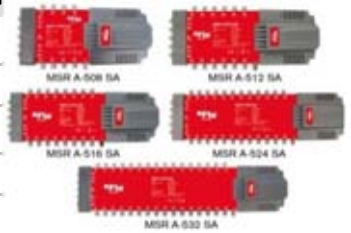
CODE	REFERENCE	DESCRIPTION	PACKAGING
0980000	AM	Mixers / Unmixersr SAT / TER., 2 In / 1 Out.	1 / 10 / 120

Multiswitches

MULTISWITCHES

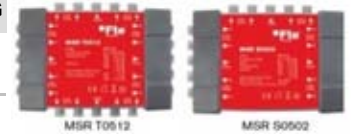
5 IN stand-alone active multiswitches

CODE	REFERENCE	DESCRIPTION	PACKAGING
0930180	MSR A 0508 SA	5 IN stand-alone+Active Terrestrial.8 outputs.	1 / 10
0930182	MSR A 0512 SA	5 IN stand-alone+Active Terrestrial.12 outputs.	1 / 10
0930184	MSR A 0516 SA	5 IN stand-alone+Active Terrestrial. 16 outputs.	1 / 10
0930186	MSR A 0524 SA	5 IN stand-alone+Active Terrestrial. 24 outputs.	1 / 10
0930188	MSR A 0532 SA	5 IN stand-alone+Active Terrestrial. 32 outputs.	1 / 10



Multitap & Multisplitter

CODE	REFERENCE	DESCRIPTION	PACKAGING
0930192	MSR T0512	Multitap. TER losses / SAT derivation gains: 12 ± 2 dB / -12 ± 2 dB.	1 / 10
0930190	MSR S0502	Multisplitter. TER losses / SAT derivation gains: ≤ 4.5 dB / 10 ± 2 dB.	1 / 10



Digitales receivers

INDOOR

DVB-T2 TERRESTRIAL digital receivers

CODE	REFERENCE	DESCRIPTION	PACKAGING
0710039	MAX T220 HD	DVB-T2 High Definition Receiver (H265) 1 SCART, 1 HDMI	1 / 10



DVB-S2 SATELLITE digital receivers

CODE	REFERENCE	DESCRIPTION	PACKAGING
0720301	eXtreme HD Compact	DVB-S2 high definition receiver. 1 SCART, 1 HDMI, Unicable1 & Unicable 2	1 / 10



Indoor audio / video equipment

INDOOR

Digital A/V HD to COFDM Modulators

CODE	REFERENCE	DESCRIPTION	PACKAGING
6000771	MODIG S	Modulator with HD Display HDMI-COFDM+loop+Mix	1 / 60



MODIG S

The usual format



HD A/V modulator to DVB-T with LOOP



Front MODIG S



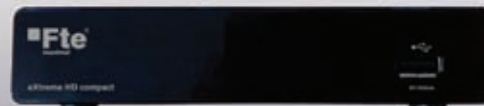
Rear MODIG S

	MODIG S
Code	6000771
Connector type	1x HDMI Type A female
Video encoding	MPEG-4 AVC /H.264
Video Bit Rate	1-18 Mb/s adjustable
Audio Bit Rate	192 Kbps
Configurable parameters of the Transport Stream	Video PID, Audio PID, PMT PID, TS ID, ONID, NID, Service Name, Service ID, Provider Name
LCN Support	Yes
Standard	DVB-T (COFDM) EN 300 744
Bandwidth	7 and 8 MHz (depending on the output channel)
Mode	8K
Output frequencies	174-230MHz / 470.862 MHz
Output level	100 dB μ V
Output attenuator	0..35 dB
MER	> 31 dB (Typical)
Programming Interface	4x 7-segment display and 6-button keypad
Power supply	+12 Vdc
Current consumption	290 mA

Fte maximal receivers: all the reliability and guarantee of a leading mark



MAX T220 HD



eXtreme HD Compact

HD digital terrestrial receivers

MAX T220 HD

Code	0710039
Type of reception	DVB-T2 receiver high definition
Number of channels	4000
Available languages OSD	EN / FR / ES / IT / DE / PT RU / PL / GR / HU / SL
Supported programs	SD/HD FTA
Supported standards	DVB-T, DVB-T2
Maximum HDMI/Scart video resolution	1080@60Hz/576i
Supported audio codecs	PCM, MPEG-1, AAC, Dolby Digital, Dolby Digital+
Standard	DVB-T2 (EN 302-755 V 1.3.1) - DVB-T (EN 300-744 V 1.61)
Audio/video output	1 SCART, 1 HDMI
Input frequency	174-230 MHz - 470-862 MHz
Entry level	-77 dBm to -20 dBm
Type of connections	ANT IN: IEC female / RF OUT: IEC male
Remote power supply	Active antennas: 5 VDC
Supply voltage	100~240 - 50/60 VAC/Hz
Max. current	< 5W
Dimensions (An. x Al. x Pr.)	167 x 107 x 38 mm

HD digital satellite receivers

eXtreme HD Compact

Code	0720301
Type of reception	DVB-S / DVB-S2 HD receiver
Number of channels	3500
Available languages OSD	EN / DE / FR / ES / IT / PT / TK / PL / RU / AR / NL
Programmed satellites	Astra 19,2E / Hotbird 13,0E / Hispasat 30W / Turksat 42E / Nilesat 7W
RGB/CVBS video output	Only CVBS
Radio mode	Yes
Transfer from receiver to receiver	USB only
Scart/HDMI output	1 / 1
4:3/ 16:9 format	Yes
Coaxial digital audio output	Yes
Teletext	Yes, owner
USB update	Yes
4:3/ 16:9 format	Yes
Input frequency	950-2150 MHz
Entry level	43-82 dB μ V
DiSEQC	1,0, 1.1, 1.2 - GoToX
Unicable	Sí
LNC Power	13V/18V/300mA
Feeding	230Vac 50~60 Hz External 12V transformer included
Maximum consumption	Max <6W

Digital signal meter for TV, cable and SAT

COMPACT 3 HD



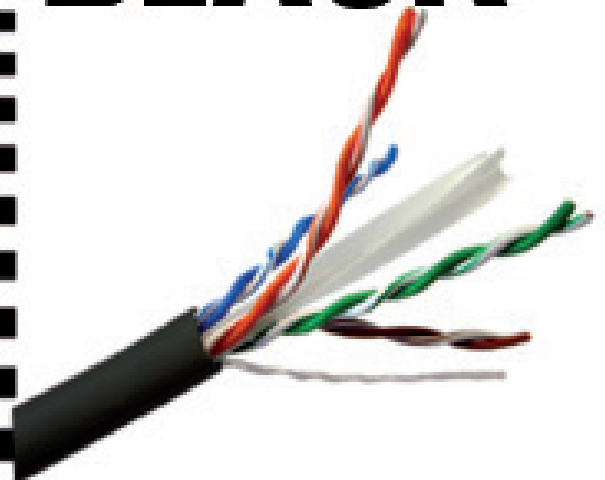
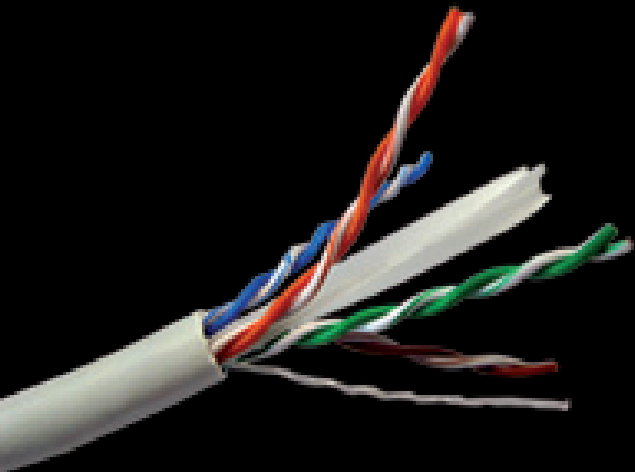
DVB-T/T2, DVB-S/S2, HEVC/H.265 at 10 bit
5" high resolution anti-glare LCD touch screen
SC optical input for optical fiber power measurement
HDMI input/output and CVBS input for monitoring



Technical Features COMPACT 3 HD

Code	3001075
Supported standards	DVB-S2/S, DVBT/T2, DVB-C
> SATELLITE INPUT / DEMODULATION	
Connector Type	F type female
Input Frequency	950 - 2150 MHz
Signal Input Level	-79.5 dBm to -3 dBm (-29.25 dB μ V y 105 dB μ V)
Band Switch Control	22KHz tone
LNB Supply	13Vdc/18Vdc, max. 400mA
Demodulation Type	QPSK, 8PSK, 16APSK
Symbol Rate	2-45 Mbaud (SCPC/MCPC)
DiseqC	Supports 1.0 / 1.1 / 1.2
Unicable	Supports Unicable 1 and Unicable 2
> DVB-T/T2/C INPUT/DEMODULATION	
Connector Type	F type female
Input Frequency	48 - 862 MHz
Signal Input Level	-79.5 dBm to -3 dBm (-29.25 dB μ V y 105 dB μ V)
ANT Supply	5Vdc, 12Vdc/24Vdc, max 100mA
Demodulation Type	QPSK,16QAM,64QAM,256QAM
> OPTICAL INPUT	
Connector types	FC / SC / ST
Wavelength	850/1270/1300/1310/1330/1490/1550/1625 nm
Optical power measurement range	-70 dBm a 3 dBm
> ANALOG A/V INPUTS/OUTPUTS	
Connector type	FC / SC / ST
Wavelength	850/1270/1300/1310/1330/1490/1550/1625 nm
Optical power measurement range	-70 dBm a 3 dBm
> LCD FEATURES	
LCD Type	TFT Transmissive
Number of Dots	800 x 480 x 3 (RGB)
Active area (WxH)	154.08 x 85.92 mm
> AV OUTPUT INTERFACE	
Connector Type	Jack 3.5 mm
Video Output	CVBS
Audio Output	Stereo Audio L/R output
> HDMI INPUT/OUTPUT CONNECTOR	
Format	HDMI 1.3 A
> AUDIO/VIDEO PROCESSING	
Video decompression	MPEG-2 MP@HL, MPEG-1 Decoding, MPEG 4 ASP@L5 HD resolution, H.264 MP&HP@L4, HW JPEG decoding, HEVC/H.265 (10 Bit)
Resolving rate	PAL-25 frame@720*576, NTSC-30 frame@720*480
Signal compatibility	Support conversion for different video formats
Video Format	4:3,16:9,By Pan & Scan and Letter Box
Audio Decompression	MPEG-1 Layer I/II, MPEG-2 Layer I/II
Audio Output Mode	Stereo, Mono, R/L
> DATA SERVICE PORT	
Connector / Data Protocol	USB / USB 2.0
File Management System	NTFS, FAT32 and FAT16
File Format	wma, mp3, mp4, avi, jpg, jpeg, bmp and img
> POWER SUPPLY	
Li-Ion Battery	7.4V/5000mAh (The machine behind labeling shall prevail)
Adapter	Input:100~240Vac - 50/60Hz Output: 12Vdc/1.5A, (Will be subject to actual configuration)
Power Consumption	Max. 10W
> PHYSICAL CHARACTERISTICS	
Dimensions (W x D x H)	255 x 180 x 60 mm
Net Weight	2,2 Kg

WHITE or BLACK



LAN Cat 6 & 6A Cables

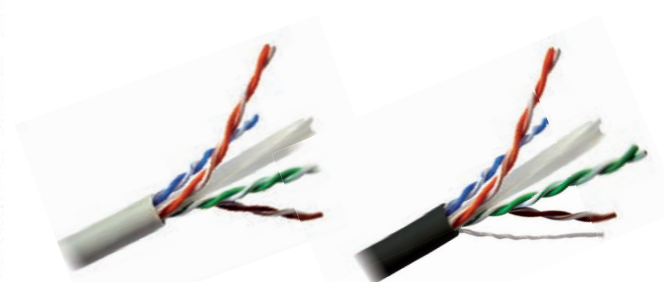
LAN cables with copper conductor

	N 600 WD	N 600 BF	N 900 WC
Code	2220606	2220609	2220900
Description	LAN Cable U/UTP Cat. 6 Cu LSZH 305m	LAN Cable U/UTP Cat. 6 Cu PE 304,8m	LAN Cable U/UTP Cat. 6A Cu LSZH 305m
Category / type	6 - U/UTP	6 - U/UTP	6A - U/UTP
Conductor material	Cu (copper)	Cu (copper)	Cu (copper)
Conductor diameter	0,51 mm	0,51 mm	0,55 mm
Ripcord	Yes	Yes	Yes
Jacket diameter (mm)	5.9 ± 0.3 mm	0.51±0.007 mm	6,2 ± 0.3 mm
Jacket colour	White	Black	Black
Jacket material	LSZH	PE	LSZH
Lenght	305 m (1000 ft)	304,8m (1000 ft)	305 m (1000 ft)
Weight	10,9 Kg	8,4 Kg	10,9 Kg
Standarization	ISO/IEC 11801, EN 50173, EN 50288, EIA/TIA 568C.2, EN 50575:2014+A1:2016	ISO/IEC 11801, EN 50173, EN 50288, EIA/TIA 568C.2, EN 50575:2014+A1:2016	ISO/IEC 11801, EN 50173, EN 50288, EIA/TIA 568C.2, EN 50575:2014+A1:2016
Reaction to fire	CPR-dca - s2, d2, a1	CPR-Fca	CPR-Cca - s1, d1, a1
Presentation	Cardboard easy pull box	Cardboard easy pull box	Cardboard easy pull box

LAN cables with CCA conductor

LAN cables with CCA conductor

	N 601 WD
Code	2220607
Description	LAN cable cat 6 U/UTP CCA LSZH 304,8m
Category / type	6 - U/UTP
Conductor material	CCA
Conductor diameter	0,51 mm
Ripcord	Yes
Jacket diameter (mm)	6.1 ± 0.3 mm
Jacket colour	White
Jacket material	LSZH
Lenght	304,8 m (1000 ft)
Weight	10,9 Kg
Standarization	ISO/IEC 11801, EN 50173, EN 50288, EIA/TIA 568C.2, EN 50575:2014+A1:2016
Reaction to fire	CPR-dca - s2, d2, a1
Presentation	Cardboard easy pull box



N 600 WD / N 601 WD / N 900 WC

N 600 BF



Multinorm PLL modulators. Analog MAV series.

CODE	REFERENCE	DESCRIPTION	PACKAGING
6000654	MAV 2169	Multi-standard UHF PLL modulator. C21-C69.	1 / 10 / 60



MAV 2169

Telephony

TELEPHONY

CODE	REFERENCE	DESCRIPTION	PACKAGING
0705001	CT 1	200m spool, 1 pair, braided	1

Field strength meters

INSTRUMENTAL

Field Strength Meters

CODE	REFERENCE	DESCRIPTION	PACKAGING
3001075	COMPACT 3 HD	Field strength meter with HEVC/H.265 10-bit encoding support	1
3001072	ENYA 72	Professional field meter for UHD TV. 7" color TFT touchscreen, battery with 6 hours of autonomy.	1
3001073	SUEN	SUN protector ENYA 72	1
3001101	KENDRA 101	Professional field strength meter UHD TV. TFT 10.1" color, touch, battery with 4 hours of autonomy.	1
3002025	CVC 1220 USB	Mini and EVO series car meter battery charger.	1
3002032	MINI BAG	Use bag for MINI Series meters.	1



COMPACT 3 HD



KENDRA 101

Networks

NETWORKS

LAN cables with copper conductor

CODE	REFERENCE	DESCRIPTION	PACKAGING
2220606	N 600 WD	Cat6 U/UTP Cu LAN Cable - CPR Dca 305m	1
2220609	N 600 BF	Cat. 6 U/UTP LAN cable in copper with PE. 305 m box. Black color.	1
2220900	N 900 WC	U/UTP LAN cable in Cu cat. 6A in LSZH. Box 305m. Gray color 23 AWG. CPR: Cca-s1, d1, a1	1



N 600 WD



N 600 BF

LAN cables with CCA conductor

CODE	REFERENCE	DESCRIPTION	PACKAGING
2220610	N 601 WD	U/UTP LAN cable in CCA cat. 6 in LSZH. Box 304.8m. Gray color 23 AWG. CPR: Dca-s1, d1, a1	1



N 601 WD

Passive multiplexor

CODE	REFERENCE	DESCRIPTION	PACKAGING
2220408	MUXICT	Passive multiplexor with ADSL filter for ICT with patchcord incorporated.	1 / 50 / 100



MUXICT

Patch cords LSZH 6 U/UTP

CODE	REFERENCE	DESCRIPTION	PACKAGING
2220080	PC-6-U-MT-0.5GY	Patch cord RJ45-RJ45 0,5 m of gray color	1 / 50 / 600
2220082	PC-6-U-MT-1GY	Patch cord RJ45-RJ45 1 m of gray color	1 / 35 / 420
2220083	PC-6-U-MT-1.5GY	Patch cord RJ45-RJ45 1,5 m of gray color	1 / 20 / 240
2220084	PC-6-U-MT-2GY	Patch cord RJ45-RJ45 2 m of gray color	1 / 15 / 180



6 U/UTP

2220086	PC-6-U-MT-3GY	Patch cord RJ45-RJ45 3 m of gray color	1 / 10 / 120
2220088	PC-6-U-MT-5GY	Patch cord RJ45-RJ45 5 m of gray color	1 / 7 / 84
2220188	PC-6-U-MT-7.5GY	Patch cord RJ45-RJ45 7,5 m of gray color	1 / 12 / 48
2220189	PC-6-U-MT-10GY	Patch cord RJ45-RJ45 10 m of gray color	1 / 10 / 40

Patch cords LSZH 6 F/UTP

CODE	REFERENCE	DESCRIPTION	PACKAGING
2220153	PC-6-F-MT-1.5GY	Patch cord RJ45-RJ45 1,5 m	1 / 20 / 240
2220154	PC-6-F-MT-2GY	Patch cord RJ45-RJ45 2 m	1 / 15 / 180
2220156	PC-6-F-MT-3GY	Patch cord RJ45-RJ45 3 m	1 / 10 / 120
2220158	PC-6-F-MT-5GY	Patch cord RJ45-RJ45 5 m	1 / 7 / 84
2220192	PC-6-F-MT-10GY	Patch cord RJ45-RJ45 10 m	1 / 10 / 40



Connectors Keystone

CODE	REFERENCE	DESCRIPTION	PACKAGING
2220204	KJT-6-U-WH	Tooless keystone jack.	1 / 100 / 1000
2220299	KJR-6-U-WH	Unshielded keystone jack 180°	1 / 100 / 1000
2220205	KJR-6A-F-SI	Shielded keystone jack 180°. 6A FTP shielded	1 / 50 / 500
2220200	KJT-5E-U-WH	RJ45 Cat. 5E modular connector. Self crimping.	1 / 100 / 1000



Tools

CODE	REFERENCE	DESCRIPTION	PACKAGING
0705250	HT	Insertion and cutting tool for keystone jack	1 / 100
0500144	HT2	Tool to crimp RJ45 connectors	1 / 100



Connectors RJ 45 male

CODE	REFERENCE	DESCRIPTION	PACKAGING
2220207	RJ45-6-U	RJ45 Cat.6 UTP connector for 23&26 AWG cable.	10 / 1000
2220209	RJ45-6-F	RJ45 Cat.6 FTP connector for 23&24 AWG cable, with hook	1/10/5000
2220203	RJ45-6-F-Eco	RJ45 Cat.6 FTP connector for 23 AWG cable, without hook.	10 / 1000



RJ45 connectors protector

CODE	REFERENCE	DESCRIPTION	PACKAGING
2220212	RJBT-BK	Colour protector for RJ45 black	25/1000/2000
2220220	RJBT-GN	Colour protector for RJ45 green	25/1000/2000



Color coding system patch cords

CODE	REFERENCE	DESCRIPTION	PACKAGING
2220226	CCS-WH	Color coding system, white.	36 / 900
2220228	CCS-BK	Color coding system, black.	36 / 900
2220230	CCS-YL	Color coding system, yellow.	36 / 900
2220232	CCS-RD	Color coding system, red.	36 / 900
2220234	CCS-BL	Color coding system, blue.	36 / 900
2220236	CCS-GN	Color coding system, green.	36 / 900
2220238	CCS-MC	Color coding system, multicolor.	36 / 900



Server cabinet

CODE	REFERENCE	DESCRIPTION	PACKAGING
0050946	SER 81042	Server cabinet 42U. 800 x 1000 x 2000 mm	1
0050948	SER 81047	Server cabinet 47U. 800 x 1000 x 2200 mm	1



Accessories

CODE	REFERENCE	DESCRIPTION	PACKAGING
2220310	PH 1T	Cable manager with cover 1U.	1 / 15
2220312	PH 1S	Cable manager 19" without cover 1U	1 / 15
0051042	ESC RACK	Brush panel for rack.	1 / 50
2220314	BRK 30	Fixed shelf 30 cm, 2U	1 / 5
2220316	BRK 40	Fixed shelf 30 cm, 2U	1 / 5
0051036	TP 2U	Metal cover 2U.	1 / 50
0051038	TP 3U	Metal cover 3U.	1 / 50
0051040	TP 4U	Metal cover 4U.	1 / 50
0051052	TERM DIG	Rackable digital thermostat.	1 / 5
0051046	BRK EX 60	Removable shelf 600 mm	1 / 5
0051050	BRK EX D60	Double removable shelf 600 mm	1 / 5
0051048	BRK F 60	Heavy load sliding self 600 mm	1 / 5
0051056	BRK EX 90	Tray EXT P/ 900 mm depth	1 / 5
0051060	BRK EX D90	Removable double tray, 900 mm depth	1 / 5
0051064	BRK F90	Heavy Duty External Tray, 900 mm depth	1 / 5
0051078	IGCK	Individual grounding connection kit	1
0051080	--	19" magneto-thermal support.	1
0052000	BA 6 AMP	PDU Basic,16A,6 x DIN49440 + ammeter.	1
0052002	BA 8 SV	PDU Basic,16A,8 x DIN49440 + Prot. Overvoltage.	1
0052008	BA 10 FL	PDU Basic,16A,10 x IEC320 C13 + fuse + ind. Lum.	1
0052010	BA 10 SW	PDU Basic, A16A, 10xIEC320 C13 + switch	1 / 10
2220320	BER 8ALS	Aluminum multi-socket 19" with on/off switch	1 / 25
2220318	CTTR 24	Set screws and nuts (24 pcs).	1
0050917	VNT	Cooling fan (unit)	1
0051032	ELEV SET	Elevation set (4 feet + 4 wheels)	1
0051044	GC RACK	Cable ring.	1 / 100



19" patch panels and switches

CODE	REFERENCE	DESCRIPTION	PACKAGING
2220286	PPC-6-U-12	19" patch panel 12 ports. Cat. 6 UTP.	1 / 15
2220288	PPC-6-U-24	19" patch panel 45 ports. Cat. 6 UTP.	1 / 15
2220294	PPC-6A-F-24	19" patch panel shielded 24 ports. Cat. 6A FTP.	1 / 15
2220290	PPC 6-U 48	Patch panel 48 ports. Cat UTP	1 / 5 / 50
2220293	PPC-U/F	19" patch panel shell 24 ports. Cat. 5e, 6.	1 / 5 / 50
2220295	PPC-BK	Bracket for shell 24 ports 19" patch panel PPC-U/F.	1 / 5
2220350	SWI 2410	SWITCH 24P GIGABIT manageable, IGMP, VLAN.	1 / 5



HDMI cables

HDMI2 CABLES

HDMI 2 Cables

CODE	REFERENCE	DESCRIPTION	PACKAGING
6000200	HDMI2-15	HDMI 2.0. Cable Length1.5 m.	1 / 50
6000205	HDMI2-50	HDMI 2.0. Cable Length5.0 m.	1 / 20
6000210	HDMI2-100	HDMI 2.0. Cable Length10 m.	1 / 20
6000215	HDMI2-150	HDMI 2.0 ACTIVE Cable.Length15 m.	1 / 20
6000220	HDMI2-200	HDMI 2.0 ACTIVE Cable.Length 20 m.	1 / 20



HDMI equipment

HDMI2 CABLES

HDMI2 splitters

CODE	REFERENCE	DESCRIPTION	PACKAGING
6000514	HS 4	HDMI splitter 1x4 version 1.4: 4Kx2K	1 / 20
6000518	HS 8	HDMI splitter 1x8 version 1.4: 4Kx2K	1 / 10



HDMI Matrix

CODE	REFERENCE	DESCRIPTION	PACKAGING
6000542	HM 42	4Kx2K HDMI 1.4 Matrix.	1



Optical Fiber

OPTICAL FIBER

Patch cords

CODE	REFERENCE	DESCRIPTION	PACKAGING
5201301	PCFAPC-S-1M	Single Mode Simplex Optical fiber Patch cords with SC/APC - SC/APC connectors 1m.	1 / 80 / 320
5201302	PCFAPC-S-2M	Latiguillo de Fibra Óptica Monomodo Simplex con conectores SC/APC - SC/APC. 2m	1 / 70 / 280
5201303	PCFAPC-S-3M	Single Mode Simplex Optical fiber Patch cords with SC/APC - SC/APC connectors 3m.	1 / 60 / 240
5201305	PCFAPC-S-5M	Single Mode Simplex Optical fiber Patch cords with SC/APC - SC/APC connectors 5m.	1 / 50 / 200
5201310	PCFAPC-S-10M	Single Mode Simplex Optical fiber Patch cords with SC/APC - SC/APC connectors 10m.	1 / 50 / 100
5201315	PCFAPC-S-15M	Single Mode Simplex Optical fiber Patch cords with SC/APC - SC/APC connectors 15m.	1 / 35 / 70



Registers

CODE	REFERENCE	DESCRIPTION	PACKAGING
5200224	RFP 24	24 fibers indoor wallmount box.	1 / 3
5200262	PATCH-24FG	24 Fibers patch panel with SC/APC adapters for 19" Rack mounting	1 / 5
5200208	RFS 8	8 Fibers Wallmount box	1 / 20
5200202	PAU-2F	Indoor terminal box for 2 Optical fiber with 2 SC/APC adapters.	1 / 50 / 100



SM SC/APC outlet

CODE	REFERENCE	DESCRIPTION	PACKAGING
5200100	BTFO	Single port faceplate fiber SM SC/APC adapter.	1 / 20 / 200



Pigtails CPR - Dca

CODE	REFERENCE	DESCRIPTION	PACKAGING
5200301	PIGTAIL ICT 1M	Single Mode Pigtail with SC/APC connector. 1m	6 / 60 / 240
5200810	ICT PIGTAIL 10 D	2 Fibers Single Mode Pigtails with SC/APC connectors. 10 m.	1 / 25 / 50
5200815	ICT PIGTAIL 15 D	2 Fibers Single Mode Pigtails with SC/APC connectors. 15 m.	1 / 20 / 40
5200820	ICT PIGTAIL 20 D	2 Fibers Single Mode Pigtails with SC/APC connectors. 20 m.	1 / 15 / 30
5200350	ICT PIGTAIL 50 D	2 Fibers Single Mode Pigtails with SC/APC connectors. 50 m.	1 / 8 / 16



Connectors & accessories

CODE	REFERENCE	DESCRIPTION	PACKAGING
5200110	QUICKCON	SC/APC SM Quick connector. Assembly without tools - TOOLLESS	10 / 100 / 400
5200150	QUICKFUS	Optical fiber mechanical splice - TOOLLESS	6 / 60 / 600
5200141	PR-40MM	40 mm transparent fusion protector tube.	100/2500/5000
5200142	PR-60MM	60 mm transparent fusion protector tube	100/2500/5000
5200120	SCAPC-ADAP	SC / APC adapter (Female) Simplex SM in green color.	25/500/1000



Herramientas

CODE	REFERENCE	DESCRIPTION	PACKAGING
5200605	VISUAL RED	Pen type Visual Fault Locator (VFL).	1 / 15
5200604	PEFO HQ+	Optical fiber stripper external coating up to Ø 5 mm 900 µm coating, 250 µm coating	1
5200602	PEFO	Optical fiber stripper external coating 900 µm coating, 250 µm coating	1 / 10
5200603	CUTKEV	Ergonomic scissors for cutting Kevlar	1 / 10 / 100



Electric car charger

Fte solar & Fte mobility

Electric car charger

CODE	REFERENCE	DESCRIPTION	PACKAGING
8100101	Fte-WB3-11-LK	11 kW three-phase electric car charging station with 6m cable and integrated Type 2 plug, DC FI charging protection, LCD and available apps	1
0011013	U+WB1-7 OCPP-LK4	Charger with 4m charging cable, residual current protection device with DC current detection (6mA DC)	1



Accessories: charger cable and cable holder

CODE	REFERENCE	DESCRIPTION	PACKAGING
0010012	Fte-LK-11-5	EV charging cable type2 11kW mode 3 with connectors	1



Optimized charging for your electric mobility

Fte e-mobility 



**Electric car
charger**



Cable
6 metros



Monofásico
o Trifásico



Conector
tipo 2



Seguro



Conectividad
inalámbrica



Pantalla
Táctil



Proteccion
IP 66

Index of references

Code	Reference
0034128	ABV 91
9004048	ACH
9001037	AHH
0703011	AIG
9004026	AIT
0901005	AKB 150
0901010	AKB 250
0901020	AKB 500
0901068	AKB 500 L
0901069	AKS 150 L
0901040	AKS 250
0901070	AKS 250 L
0901045	AKS 500
0901071	AKS 500 L
0901072	AKSS 150 L
0980000	AM
9003541	AMC 210 Lte
9001036	AMM
0500015-U	AO 15 U
0500019-U	AO 19 U
0500003-U	AO 3U
0500087	AO 870
0500009-U	AO 9U
0510790	AOQ 790 C
0510090	AOQ 90 SC
0504129-BL	APS 75
0980002	AS 2
0980003	AS 3
0980004	AS 4
0980006	AS 6
0980008	AS 8
0980108	AT 108
0980110	AT 110
0980112	AT 112
0980115	AT 115
0980120	AT 120
0980125	AT 125

Code	Reference
0980210	AT 210
0980212	AT 212
0980215	AT 215
0980220	AT 220
0980225	AT 225
0980230	AT 230
0980412	AT 412
0980415	AT 415
0980420	AT 420
0980425	AT 425
0980430	AT 430
0980616	AT 616
0980620	AT 620
0980625	AT 625
0980816	AT 816
0980825	AT 825
9002052	ATE 06
9002053	ATE 10
2008604	ATLAS 64
0500075	ATS 75
0703018	AW 75 F
0052008	BA 10 FL
0052010	BA 10 SW
0052000	BA 6 AMP
0052002	BA 8 SV
9180005	BAT 180
9180014	BAT 250
2220320	BER 8ALS
9180003	BFT 180
9180012	BFT 250
9004088	BGCH-25
9004087	BGCH-5
9180004	BGT 180
9180013	BGT 250
9004046	BHC
9004089	BMU

Index of references

Code	Reference
0703009	BNV 2000
9004021	BPV 35
9004041	BPV 40
9004004	BRC
9004027	BRD
9004052	BRIDA OMEGA
2220314	BRK 30
2220316	BRK 40
0051046	BRK EX 60
0051050	BRK EX D60
0051060	BRK EX D90
0051048	BRK F 60
0051056	BRK EX 90
0051060	BRK EX D90
9004005	BRL
9004047	BT
5200100	BTFO
0202000	BVF
9001202	C 522
9001214	C 604
2220228	CCS-BK
2220234	CCS-BL
2220236	CCS-GN
2220238	CCS-MC
2220232	CCS-RD
2220226	CCS-WH
2220230	CCS-YL
9001207	C DAB
9001023-50	CF 121-50
0703016	CF 125
9001028	CF 43
0703013	CF 47
0703034	CFC 11
0703032	CFC 58
0703030	CFC 6
0703037	CFC 6 TRI
0703017	CFR 125
2001801	CH-SD
2001800	CHR-SD

Code	Reference
9004019	CGT 12
3001075	COMPACT 3 HD
9004016	CPV 2
9004018	CPV 3
9004040	CPV 4
0705001	CT1
2220318	CTTR 24
5200603	CUTKEV
3002025	CVC 1220 USB
9002051	DCB
9003955	DIAMOND
9003955/5	DIAMOND/5
9002050	DS 2150 F
9001050	DSA 75 F
0051032	ELEV SET
3001072	ENYA 72
0051042	ESC RACK
0400325	eXcellento Black Octo
0400323	eXcellento Black Quad
0400324	eXcellento Black Quattro
0400321	eXcellento Black Single
0400322	eXcellento Black Twin
0400320	eXcellento RED HQ Unicable DCSS
0720301	eXtreme HD Compact
9003960	EYE
9003960/10	EYE/10
9002005-F1	F 0-F
0703008	FBU-BST
0703007	FBU-FBU
0703110	FBU-FSTQ
9001021-W	FBV-W
9003924	F DAB F
9003924/10	F DAB F/10
0703025	FHQ - T
0703007-01	FIX FBU-FBU
0033030-R	FR 48
0703024	FST-FBU
0703021	FST-FST
0034083	FST-IEC/BU
0034081	FST-IEC/ST

Index of references

Code	Reference
9001020-W	FST-W
0010012	Fte-LK-11-5
8100101	Fte-WB3-11-LK
0051044	GC RACK
9004086	GCH
0703029	GRT6-B
0703028	GRT6-W
9003041	GT 20
9003042	GT 40
9004001	GTP 1
9004002	GTP 2
9004000	GTS
0033007	HC 11
0033002	HC 2
0033006	HC 5
9901122-R	HCA 1122-R
0300315	HCA 42 P
0302265	HCA ZM 20/65
6000210	HDMI2-100
6000200	HDMI2-15
6000215	HDMI2-150
6000220	HDMI2-200
6000205	HDMI2-50
0303335	HLA-22
0304023	HLA-ST
6000542	HM 42
6000514	HS 4
6000518	HS 8
0705250	HT
0500144	HT-2
9003957	HyDra 35 G
9003957/12	HyDra 35 G/12
5200810	ICTPIGTAIL 10 D
5200815	ICTPIGTAIL 15 D
5200820	ICTPIGTAIL 20 D
5200350	ICTPIGTAIL 50 D
0902016	IEC/BU-FBU
0902022	IEC/ST-FBU
0051078	IGCK
0703400	K 121 W
0703121	K 200 E
0703625	K 250 WD GOLD

Code	Reference
0703454	K 290 B GOLD
0703409	K 290 B
0703411	K 290 B3
0703429	K 290 W GOLD
0703408	K 290 W
0703410	K 290 W3
0703608	K 290 WD
0703629	K 290 WD GOLD
0703630	K 290 WD3 GOLD
0703424	K 403 B3
3001101	KENDRA 101
9002030	KIC 5
0780020-6	KIT-6 OR 58 SB+ LNC
9002256-KIT	KIT M-3200
2220205	KJR-6A-F-SI
2220299	KJR-6-U-WH
2220200	KJT-5E-U-WH
2220204	KJT-6-U-WH
9000345	LG 262
0252845	LOG 2845 F 5G
9901240	LPS 1240
9902410	LPS 2410
0520315-01	Lte 5690 Zn
9004009	M 150
9002255	M 2020
9004010	M 250
9004031	M 325
9004032	M 332
9004033	M 338
9004066	M 340
9004034	M 345
9004035	M 350
9002256	M-3200
0301345	MAG 2134
0301346	MAG 4147
6000654	MAV 2169
9001151	MAX CH 6
0710039	MAX T220 HD
0701109	MF 1B
9000201	MF 201
9000203	MF 203

Index of references

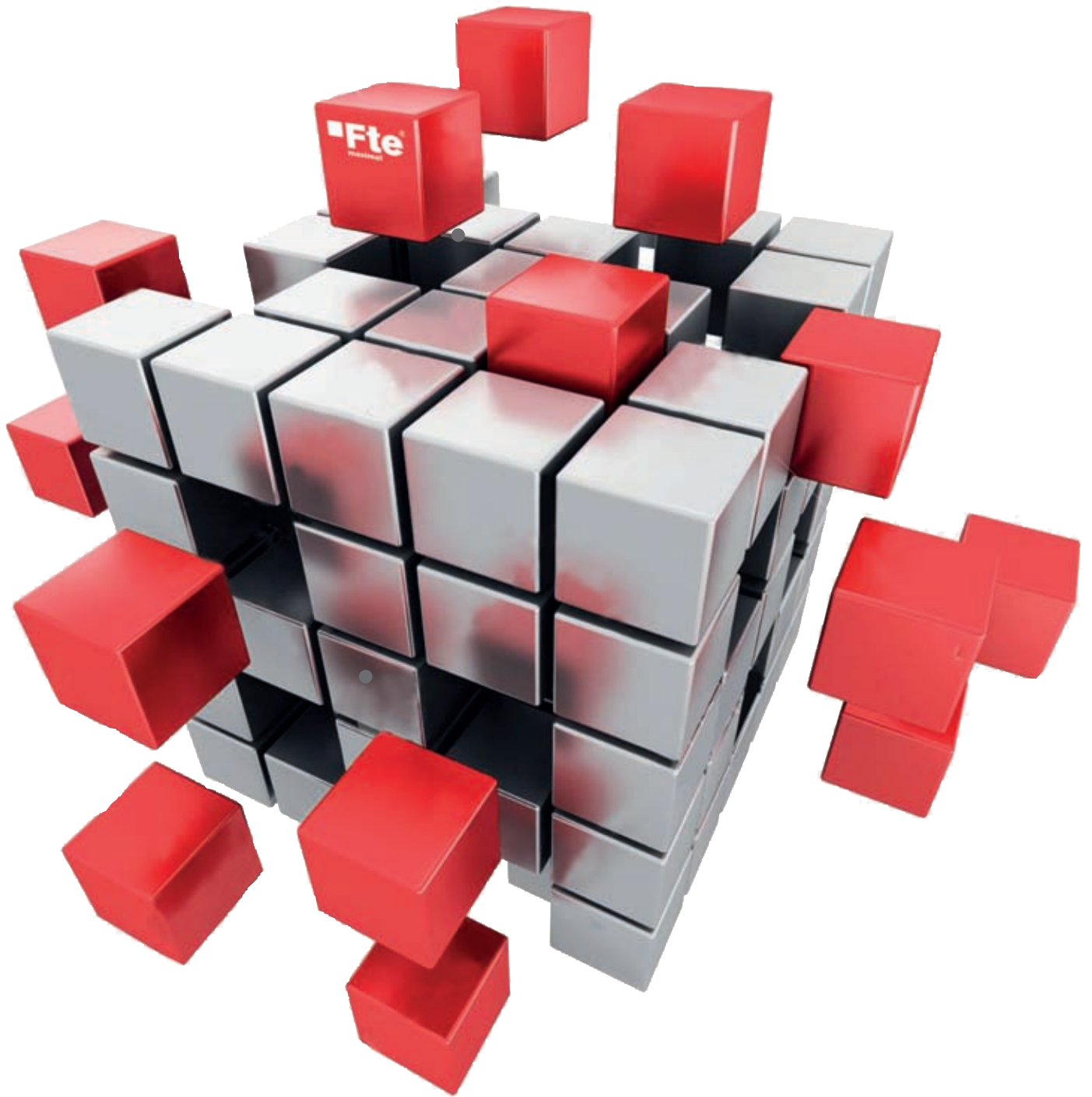
Code	Reference
2003411	MIND 32 M
2003412	MIND 32 S
3002032	MINI BAG
6000771	MODIG S
9001076	MP 76-BL
0930180	MSR A 0508 SA
0930182	MSR A 0512 SA
0930184	MSR A 0516 SA
0930186	MSR A 0524 SA
0930188	MSR A 0532 SA
0930190	MSR S0502
0930192	MSR T0512
2220408	MUXICT
2220609	N 600 BF
2220606	N 600 WD
2220610	N 601 WD
2220900	N 900 WC
0785811	OR 58 SB
0785811-24	OR 58 SB-24
0785811-4	OR 58 SB-4
0788011	OR 80 SB
0788011-24	OR 80 SB-24
0788011-4	OR 80 SB-4
0701105	OS 100 STB
0701105-3	OS 100 STB-3
0701105-PL	OS 100 STB-PL
0701128	OS 150 G
0990501	OUT BOX
9003048	P 40
9003048-L	P 40 L
9003010	P 50 P
9003050	P 50 S
9003012	P 60 P
9003011	P 60 S
9003015	P 76 P
9003014	P 76 S
5200262	PATCH-24FG
5200202	PAU-2F

Code	Reference
0981004	PAU-4 S
0981005	PAU-5 S
0981006	PAU-6 S
2220153	PC-6-F-MT-1.5GY
2220192	PC-6-F-MT-10GY
2220154	PC-6-F-MT-2GY
2220156	PC-6-F-MT-3GY
2220158	PC-6-F-MT-5GY
2220080	PC-6-U-MT-0.5GY
2220083	PC-6-U-MT-1.5GY
2220189	PC-6-U-MT-10GY
2220082	PC-6-U-MT-1GY
2220084	PC-6-U-MT-2GY
2220086	PC-6-U-MT-3GY
2220088	PC-6-U-MT-5GY
2220188	PC-6-U-MT-7,5GY
5201310	PCFAPC-S-10M
5201315	PCFAPC-S-15M
5201301	PCFAPC-S-1M
5201302	PCFAPC-S-2M
5201303	PCFAPC-S-3M
5201305	PCFAPC-S-5M
0703010	PCI
5200604	PEFO HQ+
5200602	PEFO
9003070	PG 32
9003071	PG 40
2220312	PH 1S
2220310	PH 1T
9003953	PHOENIX 5G
9003953/10	PHOENIX 5G/10
5200301	PIGTAIL ICT 1M
9003049	PLP 200
9001012	PMF
2220294	PPC-6A-F-24
2220286	PPC-6-U-12
2220288	PPC-6-U-24
2220290	PPC 6-U 48
2220295	PPC-BK
2220293	PPC-U/F

Index of references

Code	Reference
5200141	PR-40MM
5200142	PR-60MM
0400463	Premium Monoblock 6° Quad*
0400462	Premium Monoblock 6° Twin*
9001251	PS-15-2000
2001830	PS-S3000
2001845	PS-S4500
5200110	QUICKCON
5200150	QUICKFUS
5200224	RFP 24
5200208	RFS 8
2220209	RJ45-6-F
2220203	RJ45-6-F-ECO
2220207	RJ45-6-U
2220212	RJBT-BK
2220220	RJBT-GN
2001814	S1814
2001818	S1818
2001822	S2222
5200120	SCAPC-ADAP
0050946	SER 81042
0050948	SER 81047
9004042	SJT
0400150	SMF 2
3001073	SUN protector ENYA 72
2220350	SWI 2410
9004022	T 1/4
9004023	T 5/16
9921220	TAL 1220 G
0970002	TER 2
0970003	TER 3
0970004	TER 4
0970006	TER 6
0970008	TER 8
0051052	TERM DIG.
9180000	TFT 180/1
9180001	TFT 180/2
9180010	TFT 250/2
9180002	TIT 180

Code	Reference
9180011	TIT 250
0051036	TP 2U
0051038	TP 3U
0051040	TP 4U
9004024	TPG
9004043	TPM 35
9004044	TPM 40
0011013	U+WB1-7 OCPP-LK4
0702021	UMS 21
9001007	VE 1
9001008	VE 2
5200605	VISUAL RED
0050917	VNT



BCN DISTRIBUCIONES, S.A.U.

Milà i Fontanals, 118-120
08205 Sabadell
Barcelona (Spain)
Tel.: +34 93 729 27 00
Fax: +34 93 729 30 73
info@ftemaximal.com



info: www.ftemaximal.com