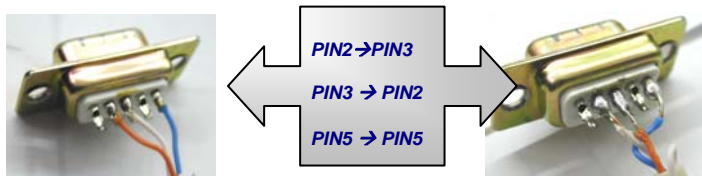


Updating procedure for Series MAX

➤ Update from PC to receiver:

Necessary material:

- FTE_Upgrade.exe software for PC.
- PC with serial port, COM_1 or COM_2.
- Windows 98 or XP.
- Serial cable "NULL MODEM".

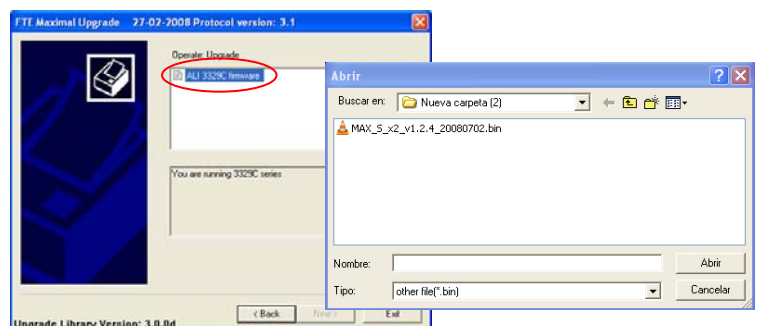
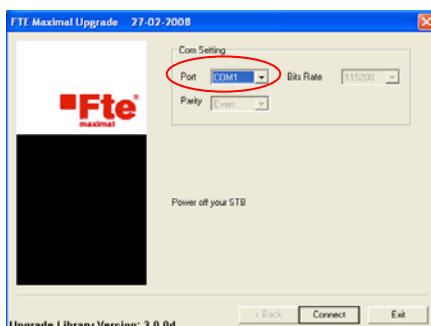
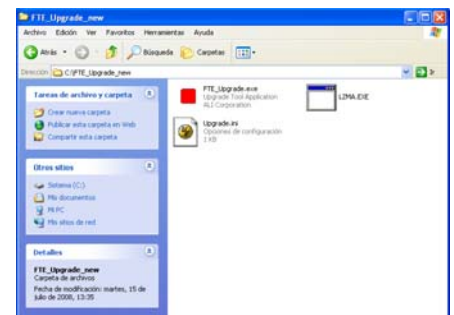


Software update:

NOTE: In case the receiver / receivers to be upgraded have the Low Power Consumption mode (LPC) and it is activated, the upgrading process will not begin. Please, disable the LPC option for upgrading.

Set the program

- Connect serial cable between PC and receiver.
- Unzip the content of the ZIP file into a folder in your computer.
- Execute FTE_Upgrade.exe.
- Select communication port.
- Turn off the receiver.
- Push the button <Connect> in the program FTE_Upgrade.exe
- Turn on the receiver and be sure that the MAX is **not** in Stand by mode.
- The program tests the serial port and the receiver. Make double-click on the model detected.
- Select .BIN file for updating.

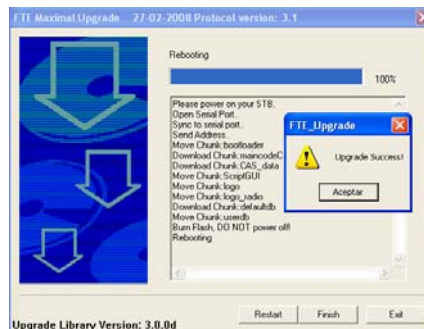


Updating MAX

- Push the button NEXT in the program FTE_Upgrade.exe
- If all is correct the software updating begins.



- When the bar arrives to the 100%, the message “Upgrade Success” appears. At this point the software upgrade is finished.



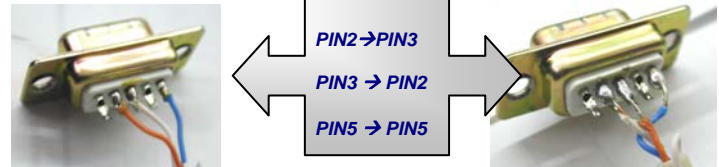
- When the updating is finished you can go out of the program FTE_Upgrade.exe pressing the “Finish” button or you can begin again pressing “Restart” button.

 **ATTENTION!!!!** You must turn off the receiver when the updating procedure is finished.

➤ Update from receiver to receiver

Necessary material:

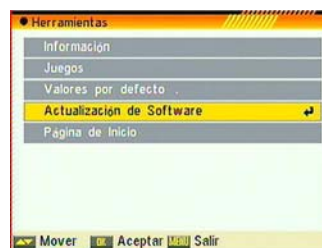
- A receiver with the last firmware version or the most recent "MASTER".
- Serial Cable "NULL MODEM."
- The receiver to upgrade "SLAVE"
- Serial cable "NULL MODEM".



Software Update from Receiver to Receiver

NOTE: In case the receiver / receivers to be upgraded have the Low Power Consumption mode (LPC) and it is activated, the upgrading process will not begin. Please, disable the LPC option for upgrading.

- Link the two receivers with the serial cable.
- Go to the "software Update" menu in the Master receiver.



- Select the update mode "Main Code"
 - AllCode : write to the Slave receiver all the code of the Master.
 - MainCode: write to the Slave receiver all the new firmware
 - Defaultdb: write to the Slave receiver the default data base of Master receiver.
 - Userdb : write to the Slave receiver the data base made by the user of Master receiver.

- If you want to update the firmware version and transfer all the channels memorized from the Master receiver to the slave, you have to choose MainCode mode in the first updating and do another updating with the Userdb mode.
- Select "Start" and then switch on (with rear panel switch) the Slave receiver and be sure that the Slave receiver isn't in Standby mode.




- When the updating is finished you must turn off the Slave receiver.

➤ Updating from Receiver to Receiver

Needed Material:

- One receiver with last version or the most recent. This receiver will be called MASTER.
 - Cable Serial "NULL MODEM".
 - The receiver to be upgraded. This receiver will be called SLAVE.
-
- Switch off both receivers with the Main Switch at the Back Panel.
 - Connect the Master and the Slave receivers with the serial cable "NULL MODEM".



 **NOTE:** In case the receiver / receivers to be upgraded have the Low Power Consumption mode (LPC) and it is activated, the upgrading process will not begin. Please, disable the LPC option for upgrading.

- Switch on the MASTER receiver through the rear switch and leave it in Stand-By mode pushing the POWER button on the remote control.

Upgrading the receiver

If all the steps have been followed properly, you can now upgrade the SLAVE receiver. The upgrading by DATA TRANSFER is done through a code which is sent to the receiver using the remote control. This code may be one among the following ones:

- **123** Upgrading only of the de Software
- **456** Upgrading only the Data Base (including configuration)
- **369** Upgrading the Software and the Data (including configuration).

To upgrade the software of the SLAVE receiver, it would be only necessary to send to the MASTER receiver the keys combination 123.

- Now it's time to switch on the SLAVE receiver.

When the updating is finished you must turn off the Slave receiver.