

SMART HOME STARTER KIT



With **THE EASY-TO-USE Smart Home Starter Kit**, the user gets a **HOME system** for the control and configuration of their home. This is an extendable kit containing the Gateway (central unit) with an **integrated environmental**, two wirelessly controlled power outlets, two wall switches with their batteries that can be easily installed anywhere. It can be expanded with optional PIRs, door and window sensors, and many other devices, using the compatible radio frequency or are controlled by Wi-Fi.

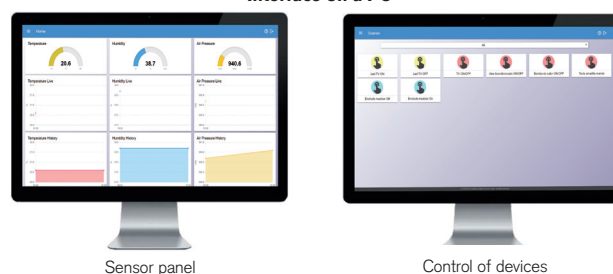
Technical specifications. IDS core Smart Home Starter Kit

	IDS core GATEWAY V1 KIT1 WHITE	IDS core GATEWAY V1 KIT1 BLACK
Code	7800100	7800101
Description	Smart Home Starter KIT White	Smart Home Starter KIT Black
WI-FI	User access, internet connection (if requested by the user) and communication with Wi-Fi outlets (Support device with software Tasmota).	
WI-FI Access Point	First installation access or for operation as a network.	
Receiver / transmitter 433 MHZ/ 868 MHZ	Communication with compatible 433 MHz / 868 MHz devices (e.g. power outlets, switches, door/window sensors, move sensors, temperature sensors, etc.)	
IR Receiver / transmitter	Remote control of devices with IR function 38KHz compatible (Receivers, televisions, DVD player, high-quality receiver, etc.)	
Barometric sensor	Measurement of temperature, humidity and air pressure inside	
User access	Modern web interface (Scalable user interface on different devices such as PCs, tablets and smartphones)	
Device monitoring	Direct using the web interface / Using timers / using rules (scenes)	
Notifications	The user can be informed when there is a change in condition or in a sensor (for example Email)	
Software update	Using the web interface for future functions and implementation of new IOT devices that were supported in new software	
Status LED and reset button	Yes	

- First installation access or for operation as a network.
- Communication with compatible 433 MHz / 868 MHz devices (e.g. power outlets, switches, door/window sensors, move sensors, temperature sensors, etc.).
- It can additionally control other IoT devices, such as WiFi power outlets with Tasmota software, or RF devices that works in the frequencies 433 MHz/868 MHz.



Interface on a PC



Interface on a smartphone

